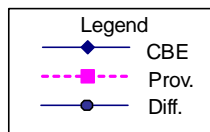
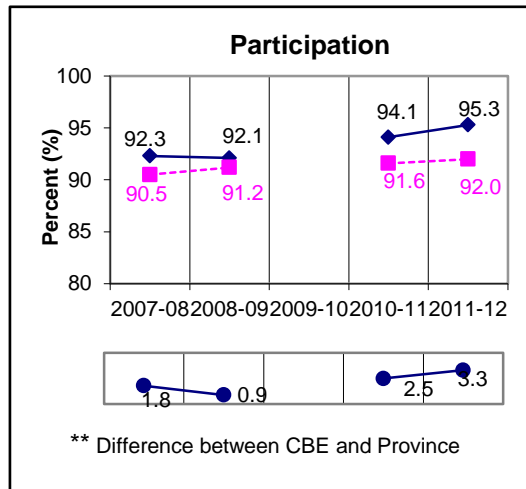
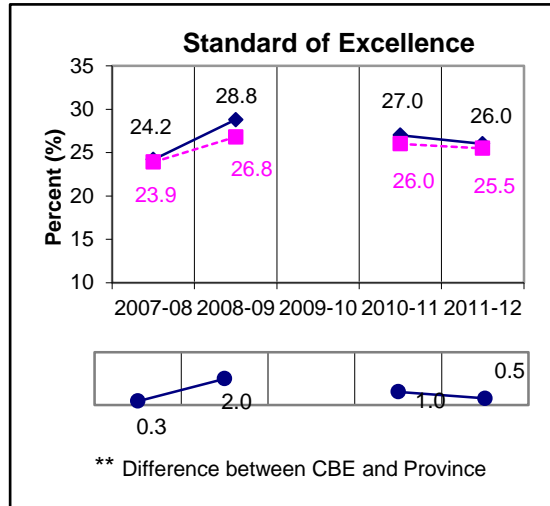
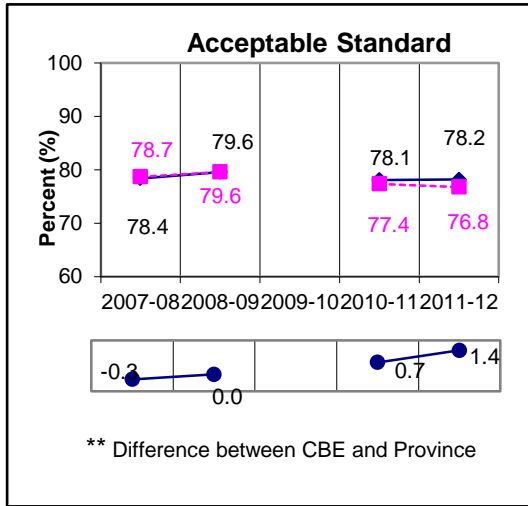


**Grade 3 Mathematics Results:
*All Students Enrolled (Cohort)**



Note:

* The **All Students Enrolled (Cohort)** category includes both writers and non-writers. Alberta Education requires jurisdictions to report cohort results.

** A positive difference on the **Difference between CBE and Province** graph indicates the CBE result is higher than that of the province, whereas a negative difference indicates a lower CBE performance.

2011-2012 marks the second year of full implementation of the Grades 3, 6 and 9 Provincial Achievement Tests for the new Mathematics program of studies.