



Northwest and North Central French Immersion Programs In-Person Session

June 13, 2018

learning | **as unique** | as every student



**Calgary Board
of Education**

Agenda

- Welcome and introductions
- Review where we are in the process
- Review feedback and themes
- Scenario station instructions and next steps
- Scenario stations: review and discuss scenarios

Welcome and Introductions

Brant Parker, Director, Area 1

Darlene Unruh, Director, Area 2

Scott MacNeill, Director, Area 3

Carrie Edwards, Director, Planning and Transportation

Mike Nelson, System Principal, Area 2

Anne Trombley, Manager, Planning

Karen Drummond, Manager, Community Engagement

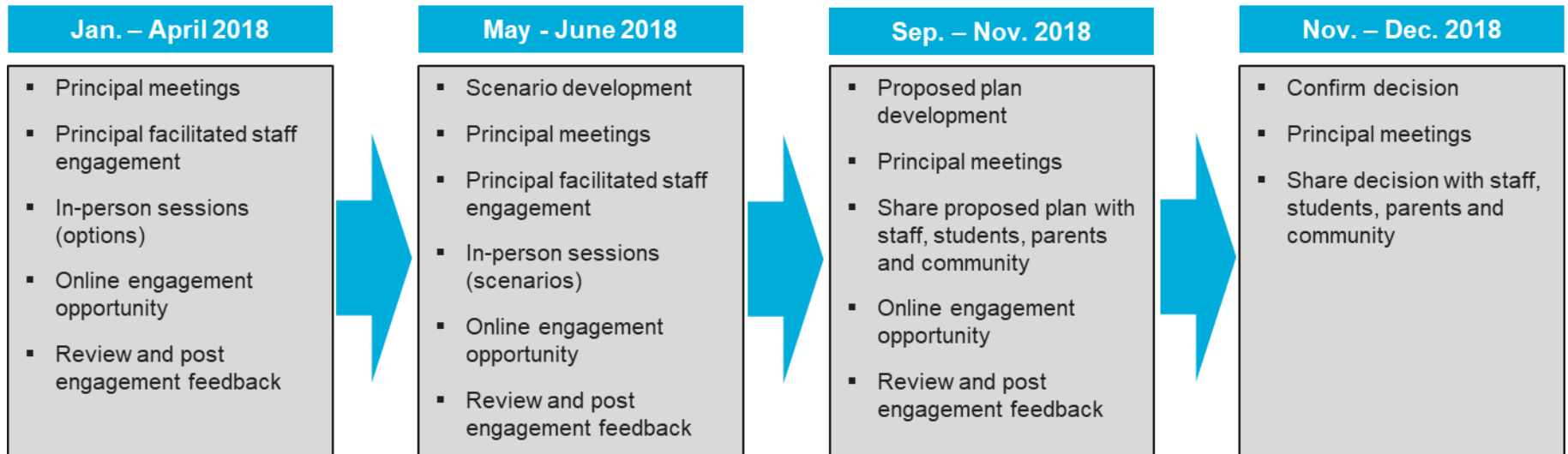
Lindsay Cova Martinez, Planning Analyst

Karla Anderson, Community Engagement Advisor

Principles of Participation

- We minimize distractions.
- We balance air time fairly.
- We speak one at a time.
- We listen to understand before we speak.
- We can disagree respectfully.
- We can change our mind.

Engagement Timeline



Phase I: Options

- The first phase of the northwest and north central Early and Late French Immersion Programs engagement began with a broad discussion of four options:
 - Change boundaries
 - Change grade configurations
 - Expand program/locations
 - Long term cap on enrolment
- Principal-facilitated staff sessions, three public in-person sessions and an online engagement opportunity were hosted to gather stakeholder input and feedback on the future of the northwest and north central French Immersion Programs.

Phase II: Scenarios

- Scenarios were drafted considering all combined input and feedback to date along with CBE values and planning principles, available space in schools, financial sustainability, government legislation and more.
- Schools participating in this engagement include: Banff Trail, Branton, Eric Harvie, F. E. Osborne, Georges P. Vanier, Hidden Valley, King George, Tuscany, Twelve Mile Coulee, Valley Creek and Varsity Acres.

Implementation Givens

- Some implementation givens:
 - Grandfather for one year
 - Alternative programs pay for transportation
 - Transportation services to be in alignment with current CBE practices
 - Out-of-attendance area students
- Outside the scope of this engagement:
 - High school grade reconfiguration

Every Student is Important

After reviewing the feedback we received, we want to emphasize a couple points:

- In response to interest, the CBE offers families both the Early and the Late French Immersion Programs. We are not considering discontinuing either program through this engagement process.
- The needs and perspectives of ALL our families will be given careful consideration throughout the engagement process regardless of the type of program or current enrolment.
- We are committed to providing engagement opportunities for prospective French Immersion families as well as families with students currently enrolled in a CBE French Immersion Program or regular program.

Overall Themes

- Support for community and student redistribution through boundary and grade reconfiguration to maximize space and balance capacity
- Program and location expansion across north Calgary is seen as favourable with many suggestions to do this by implementing dual track
- Capping enrolment is acknowledged by both staff and parents as a great tool for predictability and manageable class sizes but is seen as the least favourable option as it limits access to the Early and Late French Immersion Programs

Overall Themes continued

- Concerns with overcrowding, class sizes, length of travel time, disruptions to students and staff as well as unequal status of the Early and Late French Immersion Programs
- Concerns for solution longevity if implementing options in isolation
- Strong support for prioritization of French Immersion over other language programs

Scenario Station Instructions

- Four stations: one scenario discussed at each station. Participants have the opportunity to circulate through each of the four stations.
- 30-minutes allocated to review and discuss a scenario before moving to the next station.
 - During the first ten-minutes a scenario overview will be presented.
 - Remaining 20-minutes will be opened up for Q&A and allow participants to document their feedback on post-it notes or directly onto brown paper at the station
- At each station, a decision maker, a planning subject matter expert and a facilitator will be available.

Scenario Station Instructions

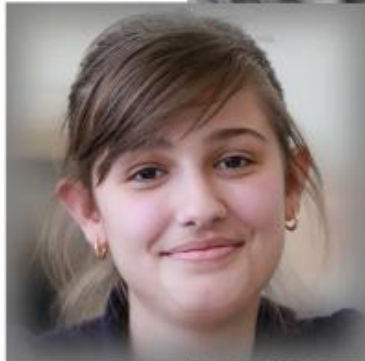
- At each station, please document your feedback on the post-it notes or directly on the brown paper.
- You can add stickers to feedback you support.
- The session will be over once the four 30-minute station rounds have been completed. We will not be coming back together once the rounds are complete.
- If you would like to take the opportunity to go back to each station to review the feedback and add stickers to the feedback you support, please do so.

Next Steps and Closing Remarks

- Please complete a session evaluation before you leave tonight
- Next steps:
 - Online discussion forum open June 1-17
 - In-person session and online discussion forum notes will be posted by the end of June
 - Additional engagement opportunities to discuss proposed plans will occur in the fall
- Information about this engagement can be found at www.cbe.ab.ca/dialogue



Calgary Board of Education



Northwest and North Central French Immersion Programs In-Person Session

June 11, 2018

learning | **as unique** | as every student



**Calgary Board
of Education**

Agenda

- Welcome and introductions
- Review where we are in the process
- Review feedback and themes
- Scenario station instructions and next steps
- Scenario stations: review and discuss scenarios

Welcome and Introductions

Althea Adams, Trustee, Wards 3 & 4

Brant Parker, Director, Area 1

Darlene Unruh, Director, Area 2

Scott MacNeill, Director, Area 3

Carrie Edwards, Director, Planning and Transportation

Anne Trombley, Manager, Planning

Karen Drummond, Manager, Community Engagement

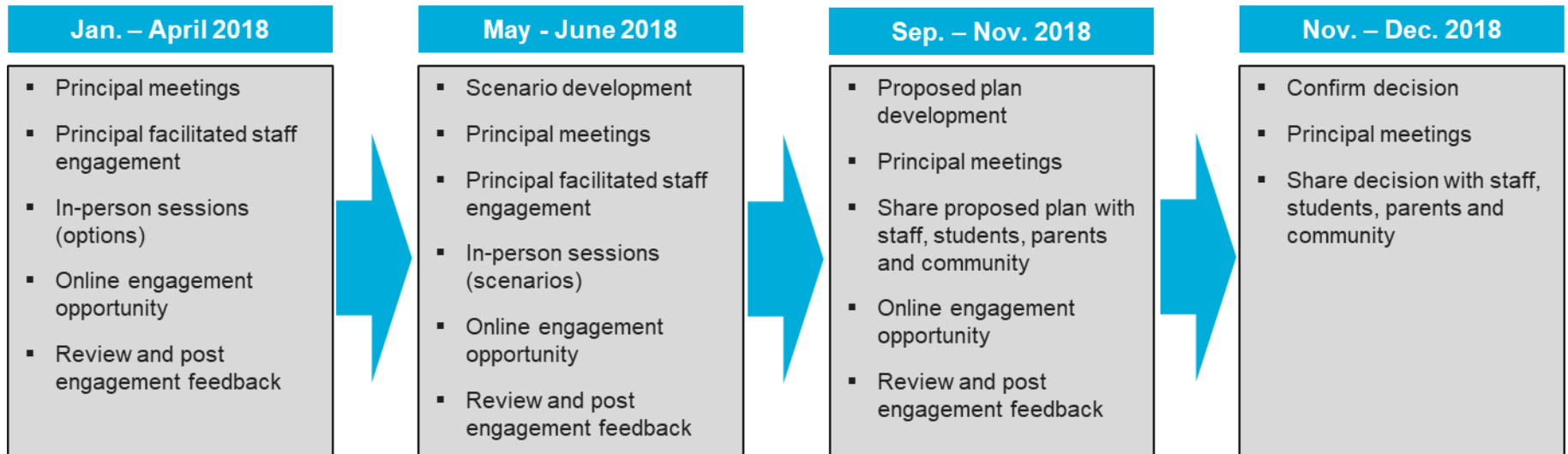
Lindsay Cova Martinez, Planning Analyst

Karla Anderson, Community Engagement Advisor

Principles of Participation

- We minimize distractions.
- We balance air time fairly.
- We speak one at a time.
- We listen to understand before we speak.
- We can disagree respectfully.
- We can change our mind.

Engagement Timeline



Phase I: Options

- The first phase of the northwest and north central Early and Late French Immersion Programs engagement began with a broad discussion of four options:
 - Change boundaries
 - Change grade configurations
 - Expand program/locations
 - Long term cap on enrolment
- Principal-facilitated staff sessions, three public in-person sessions and an online engagement opportunity were hosted to gather stakeholder input and feedback on the future of the northwest and north central French Immersion Programs.

Phase II: Scenarios

- Scenarios were drafted considering all combined input and feedback to date along with CBE values and planning principles, available space in schools, financial sustainability, government legislation and more.
- Schools participating in this engagement include: Banff Trail, Branton, Eric Harvie, F. E. Osborne, Georges P. Vanier, Hidden Valley, King George, Tuscany, Twelve Mile Coulee, Valley Creek and Varsity Acres.

Implementation Givens

- Some implementation givens:
 - Grandfather for one year
 - Alternative programs pay for transportation
 - Transportation services to be in alignment with current CBE practices
 - Out-of-attendance area students
- Outside the scope of this engagement:
 - High school grade reconfiguration

Every Student is Important

After reviewing the feedback we received, we want to emphasize a couple points:

- In response to interest, the CBE offers families both the Early and the Late French Immersion Programs. We are not considering discontinuing either program through this engagement process.
- The needs and perspectives of ALL our families will be given careful consideration throughout the engagement process regardless of the type of program or current enrolment.
- We are committed to providing engagement opportunities for prospective French Immersion families as well as families with students currently enrolled in a CBE French Immersion Program or regular program.

Overall Themes

- Support for community and student redistribution through boundary and grade reconfiguration to maximize space and balance capacity
- Program and location expansion across north Calgary is seen as favourable with many suggestions to do this by implementing dual track
- Capping enrolment is acknowledged by both staff and parents as a great tool for predictability and manageable class sizes but is seen as the least favourable option as it limits access to the Early and Late French Immersion Programs

Overall Themes continued

- Concerns with overcrowding, class sizes, length of travel time, disruptions to students and staff as well as unequal status of the Early and Late French Immersion Programs
- Concerns for solution longevity if implementing options in isolation
- Strong support for prioritization of French Immersion over other language programs

Scenario Station Instructions

- Four stations: one scenario discussed at each station. Participants have the opportunity to circulate through each of the four stations.
- 30-minutes allocated to review and discuss a scenario before moving to the next station.
 - During the first ten-minutes a scenario overview will be presented.
 - Remaining 20-minutes will be opened up for Q&A and allow participants to document their feedback on post-it notes or directly onto brown paper at the station
- At each station, a decision maker, a planning subject matter expert and a facilitator will be available.

Scenario Station Instructions

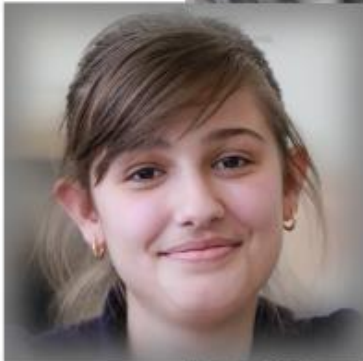
- At each station, please document your feedback on the post-it notes or directly on the brown paper.
- You can add stickers to feedback you support.
- The session will be over once the four 30-minute station rounds have been completed. We will not be coming back together once the rounds are complete.
- If you would like to take the opportunity to go back to each station to review the feedback and add stickers to the feedback you support, please do so.

Next Steps and Closing Remarks

- Complete a session evaluation before you leave tonight
- Next steps:
 - Online survey open June 1-17
 - In-person session and online discussion forum notes will be posted by the end of June
 - Additional engagement opportunities to discuss proposed plans will occur in the fall
- Information about this engagement can be found at www.cbe.ab.ca/dialogue



Calgary Board of Education



Northwest and North Central French Immersion Programs In-Person Session

June 7, 2018

learning | **as unique** | as every student



**Calgary Board
of Education**

Agenda

- Welcome and introductions
- Review where we are in the process
- Review feedback and themes
- Scenario station instructions and next steps
- Scenario stations: review and discuss scenarios

Welcome and Introductions

Althea Adams, Trustee, Wards 3 & 4

Brant Parker, Director, Area 1

Darlene Unruh, Director, Area 2

Scott MacNeill, Director, Area 3

Carrie Edwards, Director, Planning and Transportation

Anne Trombley, Manager, Planning

Karen Drummond, Manager, Community Engagement

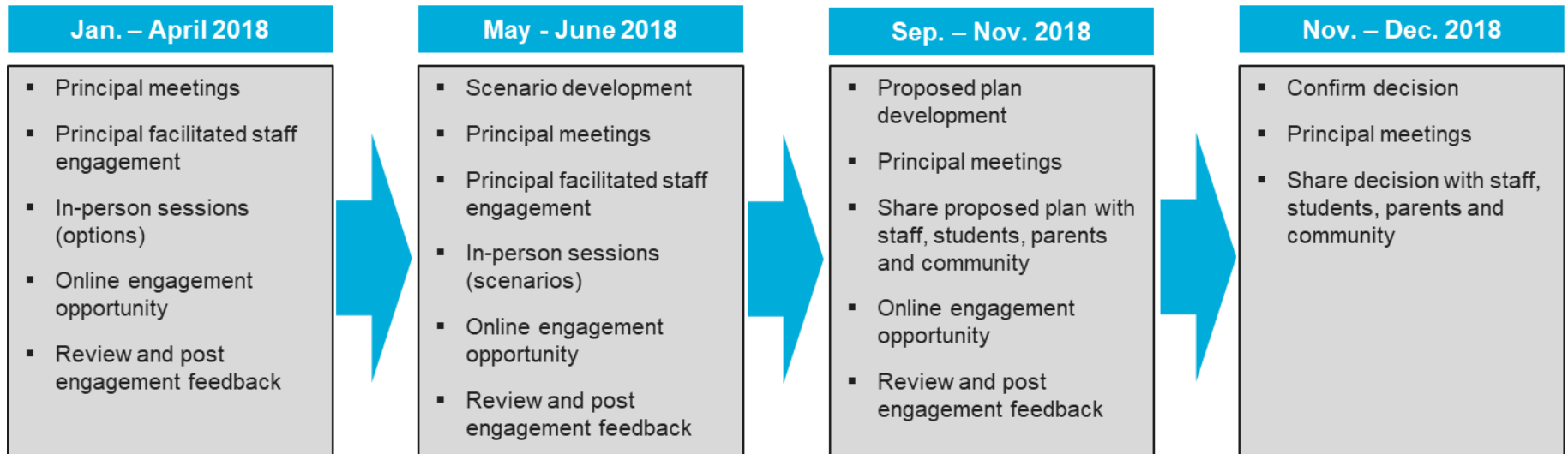
Lindsay Cova Martinez, Planning Analyst

Karla Anderson, Community Engagement Advisor

Principles of Participation

- We minimize distractions.
- We balance air time fairly.
- We speak one at a time.
- We listen to understand before we speak.
- We can disagree respectfully.
- We can change our mind.

Engagement Timeline



Phase I: Options

- The first phase of the northwest and north central Early and Late French Immersion Programs engagement began with a broad discussion of four options:
 - Change boundaries
 - Change grade configurations
 - Expand program/locations
 - Long term cap on enrolment
- Principal-facilitated staff sessions, three public in-person sessions and an online engagement opportunity were hosted to gather stakeholder input and feedback on the future of the northwest and north central French Immersion Programs.

Phase II: Scenarios

- Scenarios were drafted considering all combined input and feedback to date along with CBE values and planning principles, available space in schools, financial sustainability, government legislation and more.
- Schools participating in this engagement include: Banff Trail, Branton, Eric Harvie, F. E. Osborne, Georges P. Vanier, Hidden Valley, King George, Tuscany, Twelve Mile Coulee, Valley Creek and Varsity Acres.

Implementation Givens

- Some implementation givens:
 - Grandfather for one year
 - Alternative programs pay for transportation
 - Transportation services to be in alignment with current CBE practices
 - Out-of-attendance area students
- Outside the scope of this engagement:
 - High school grade reconfiguration

Every Student is Important

After reviewing the feedback we received, we want to emphasize a couple points:

- In response to interest, the CBE offers families both the Early and the Late French Immersion Programs. We are not considering discontinuing either program through this engagement process.
- The needs and perspectives of ALL our families will be given careful consideration throughout the engagement process regardless of the type of program or current enrolment.
- We are committed to providing engagement opportunities for prospective French Immersion families as well as families with students currently enrolled in a CBE French Immersion Program or regular program.

Overall Themes

- Support for community and student redistribution through boundary and grade reconfiguration to maximize space and balance capacity
- Program and location expansion across north Calgary is seen as favourable with many suggestions to do this by implementing dual track
- Capping enrolment is acknowledged by both staff and parents as a great tool for predictability and manageable class sizes but is seen as the least favourable option as it limits access to the Early and Late French Immersion Programs

Overall Themes continued

- Concerns with overcrowding, class sizes, length of travel time, disruptions to students and staff as well as unequal status of the Early and Late French Immersion Programs
- Concerns for solution longevity if implementing options in isolation
- Strong support for prioritization of French Immersion over other language programs

Scenario Station Instructions

- Four stations: one scenario discussed at each station. Participants have the opportunity to circulate through each of the four stations.
- 30-minutes allocated to review and discuss a scenario before moving to the next station.
 - During the first ten-minutes a scenario overview will be presented.
 - Remaining 20-minutes will be opened up for Q&A and allow participants to document their feedback on post-it notes or directly onto brown paper at the station
- At each station, a decision maker, a planning subject matter expert and a facilitator will be available.

Scenario Station Instructions

- At each station, please document your feedback on the post-it notes or directly on the brown paper.
- You can add stickers to feedback you support.
- The session will be over once the four 30-minute station rounds have been completed. We will not be coming back together once the rounds are complete.
- If you would like to take the opportunity to go back to each station to review the feedback and add stickers to the feedback you support, please do so.

Next Steps and Closing Remarks

- Complete a session evaluation before you leave tonight
- Next steps:
 - Online survey open June 1-17
 - In-person session and online discussion forum notes will be posted by the end of June
 - Additional engagement opportunities to discuss proposed plans will occur in the fall
- Information about this engagement can be found at www.cbe.ab.ca/dialogue



Calgary Board of Education