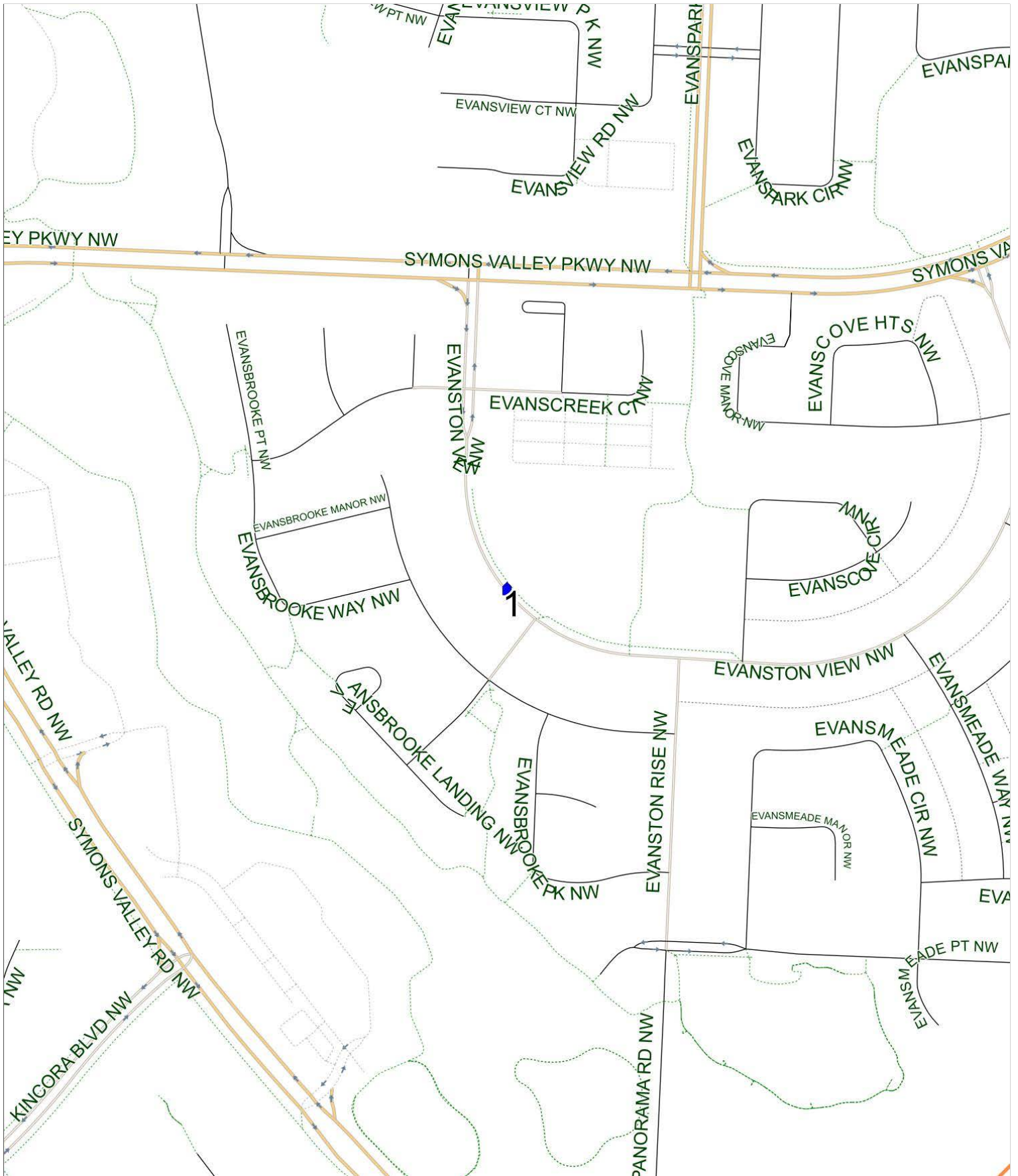


Colonel Macleod D AM

Operator: Southland - Ogden Yard (403) 253-9323
Description: Evanston

Eff: 2019-09-03

#	Time	Description
1	7:10 AM	Northbound Evanston View (west arm) after Evansbrooke Link NW at CT Stop
2	7:45 AM	Colonel Macleod School, Northbound 6 Street NE

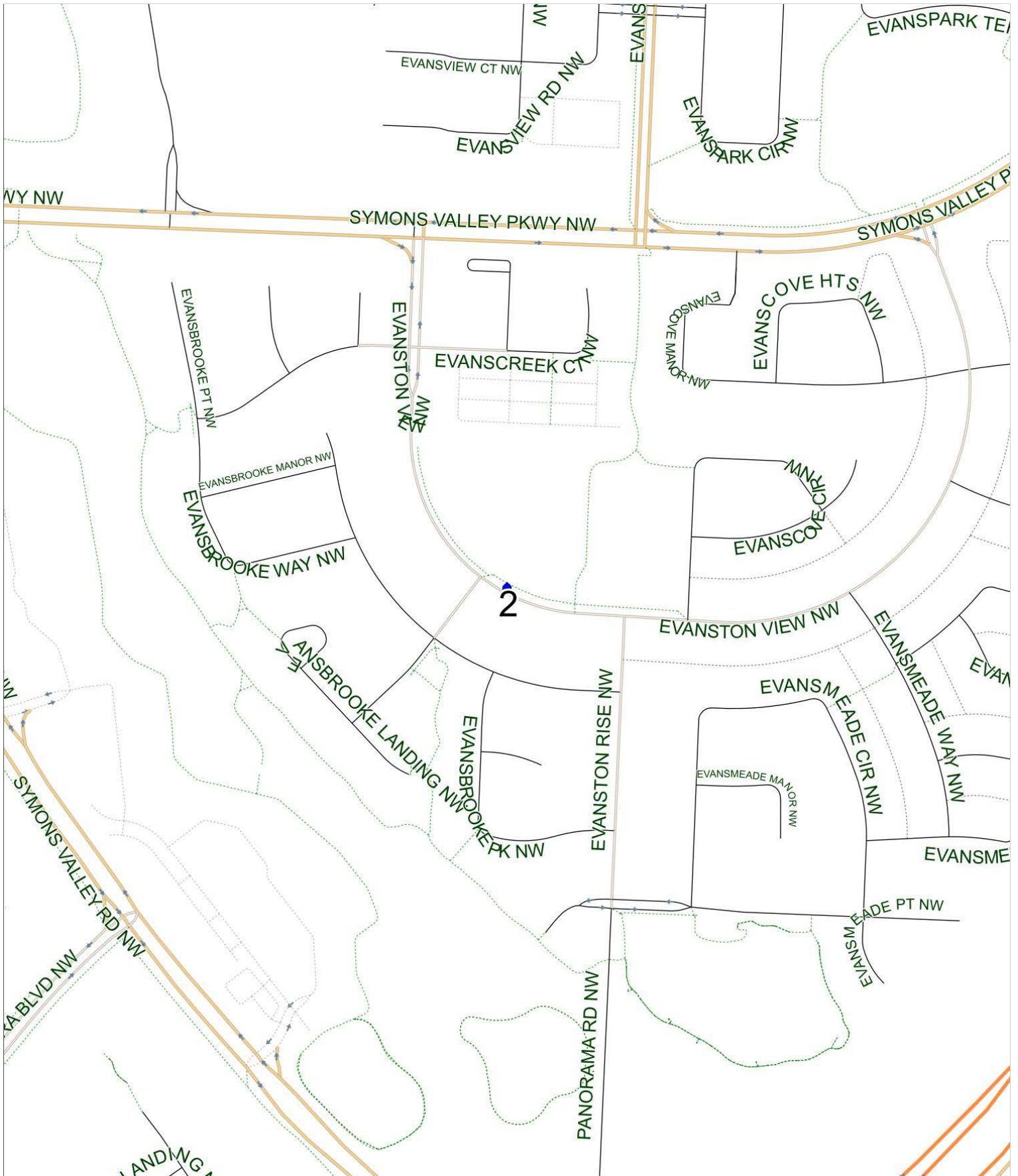


Colonel Macleod D PM (MTWR)

Operator: Southland - Ogden Yard (403) 253-9323
Description: Evanston

Eff: 2019-09-03

#	Time	Description
1	2:35 PM	Colonel Macleod School, Northbound 6 Street NE
2	2:56 PM	Southbound Evanston View (west arm) after Evansbrooke Link NW at CT Stop



Colonel Macleod D/Georges P . Vanier A PM (MTWR)

Operator: Southland - Ogden Yard (403) 253-9323
Description: Evanston

Eff: 2019-09-03

#	Time	Description
1	4:10 PM	Georges P. Vanier, Westbound 31 Avenue Avenue NE
2	4:38 PM	Eastbound Evanston Drive after Evanpark Way NW at the green space
3	4:42 PM	Eastbound Evanston View beforeEvansbrooke Link NW at CT Stop
4	4:49 PM	Northbound Evanston Drive after Evansridge Place NW at cement pad



Colonel Macleod D/Georges P . Vanier A PM (F)

Operator: Southland - Ogden Yard (403) 253-9323
 Description: Evanston

Eff: 2019-09-03

#	Time	Description
1	12:05 PM	Colonel Macleod School, Northbound 6 Street NE
2	12:10 PM	Georges P. Vanier, Westbound 31 Avenue Avenue NE
3	12:35 PM	Eastbound Evanston Drive after Evanpark Way NW at the green space
4	12:40 PM	Eastbound Evanston View beforeEvansbrooke Link NW at CT Stop
5	12:43 PM	Southbound Evanston View (west arm) after Evansbrooke Link NW at CT Stop
6	12:52 PM	Northbound Evanston Drive after Evansridge Place NW at cement pad

