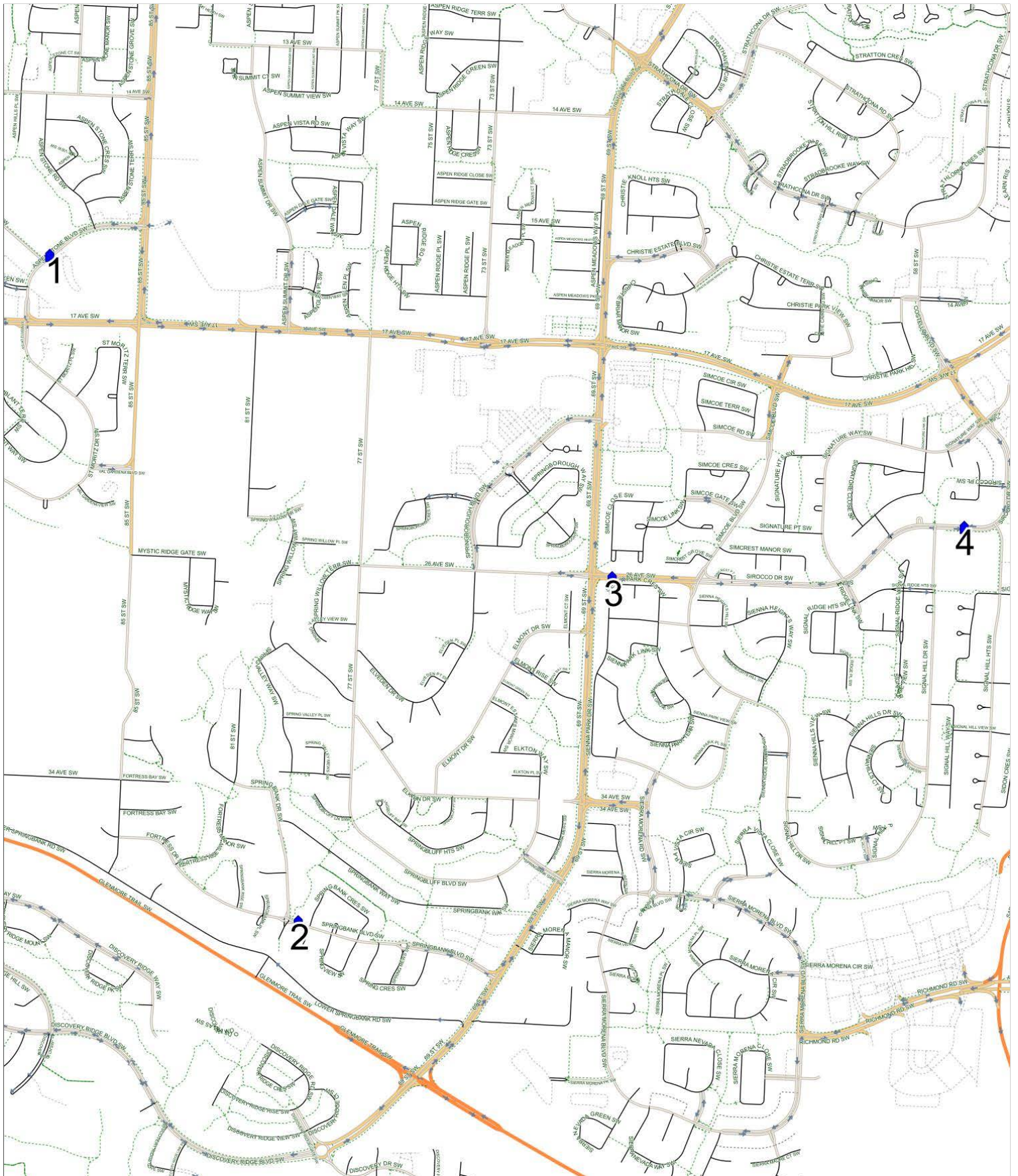


# Glenmeadows B

Operator: Southland - CFB Yard (403) 387-2907  
Description: Aspen, Springbank Hill, Signal Hill

Eff: 2019-09-03

#	Time	Description
1	8:36 AM	Southbound Aspen Stone Blvd before Aspen Hills Drive SW at green space
2	8:43 AM	Eastbound Springbank Blvd after the traffic circle at CT stop
3	8:47 AM	Eastbound Sirocco Drive after 69 Street SW at CT stop
4	8:49 AM	Eastbound Sirocco Drive SW after Signal Hill Drive SW (east arm) at green space
5	9:00 AM	Glenmeadows School - Eastbound Grove Hill Road SW

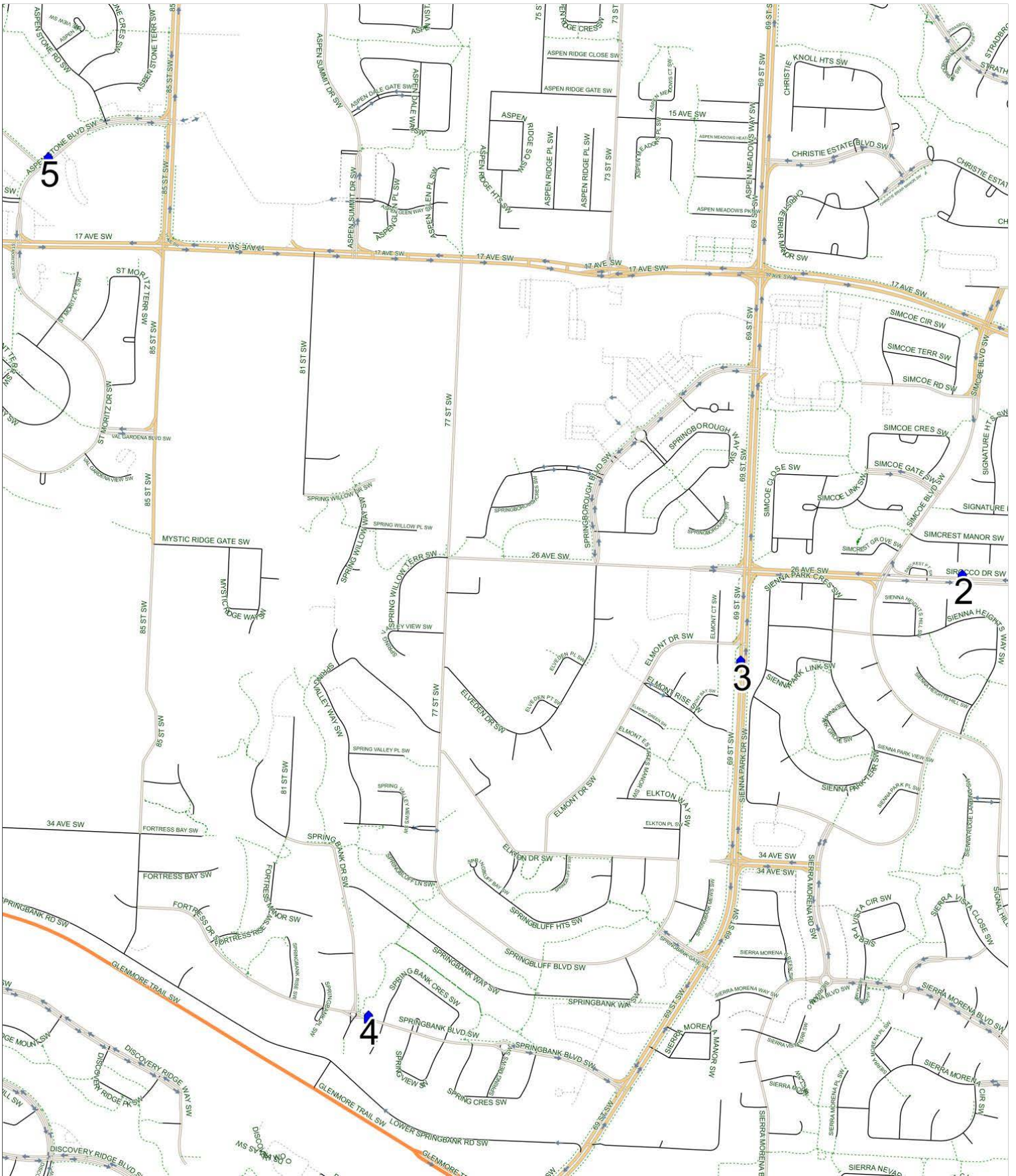


## Glenmeadows B PM (MTWR)

Operator: Southland - CFB Yard (403) 387-2907  
 Description: Aspen, Springbank Hill, Signal Hill

Eff: 2019-09-03

#	Time	Description
1	4:00 PM	Glenmeadows School - Eastbound Grove Hill Road SW
2	4:07 PM	Westbound Sirocco Drive SW before Simcrest Point SW at green space
3	4:10 PM	Southbound 69 Street after Elmont Drive SW at CT stop
4	4:16 PM	Westbound Springbank Blvd before the traffic circle at green space
5	4:24 PM	Northbound Aspen Stone Blvd after Aspen Hills Drive SW at green space



## Glenmeadows B PM (F)

Operator: Southland - CFB Yard (403) 387-2907  
 Description: Aspen, Springbank Hill, Signal Hill

Eff: 2019-09-03

#	Time	Description
1	1:40 PM	Glenmeadows School - Eastbound Grove Hill Road SW
2	1:47 PM	Westbound Sirocco Drive SW before Simcrest Point SW at green space
3	1:50 PM	Southbound 69 Street after Elmont Drive SW at CT stop
4	1:56 PM	Westbound Springbank Blvd before the traffic circle at green space
5	2:04 PM	Northbound Aspen Stone Blvd after Aspen Hills Drive SW at green space

