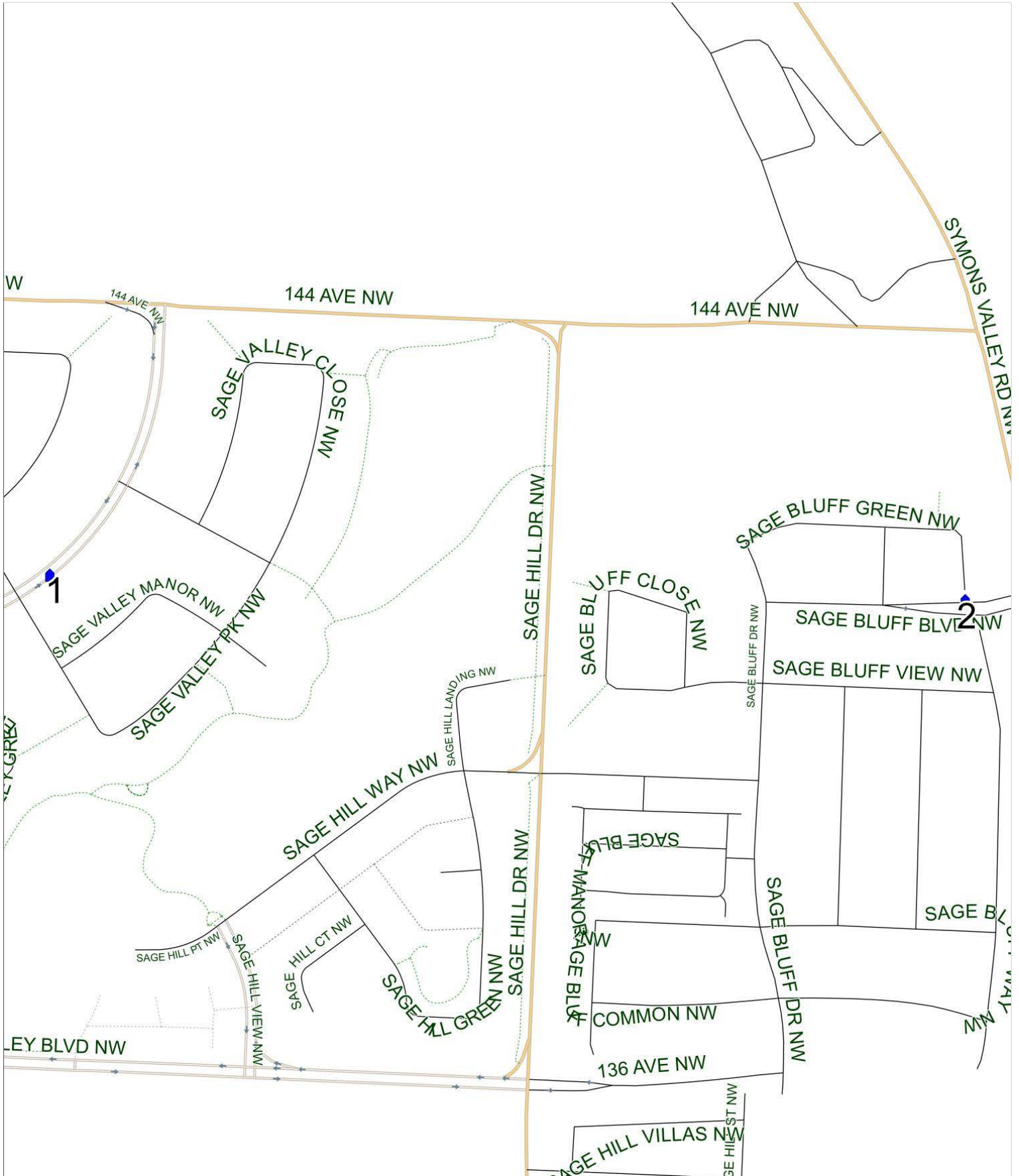


Hawkwood D AM

Operator: Southland - Ogden Yard (403) 253-9323
Description: Sage Hill

Eff: 2019-09-03

#	Time	Description
1	8:39 AM	Eastbound Sage Valley Drive after Sage Valley Park NW at CT Stop
2	8:43 AM	Westbound Sage Bluff Blvd after Symons Valley Road NW at pedestrian walkway
3	9:00 AM	Hawkwood School, Westbound Hawkwood Blvd NW

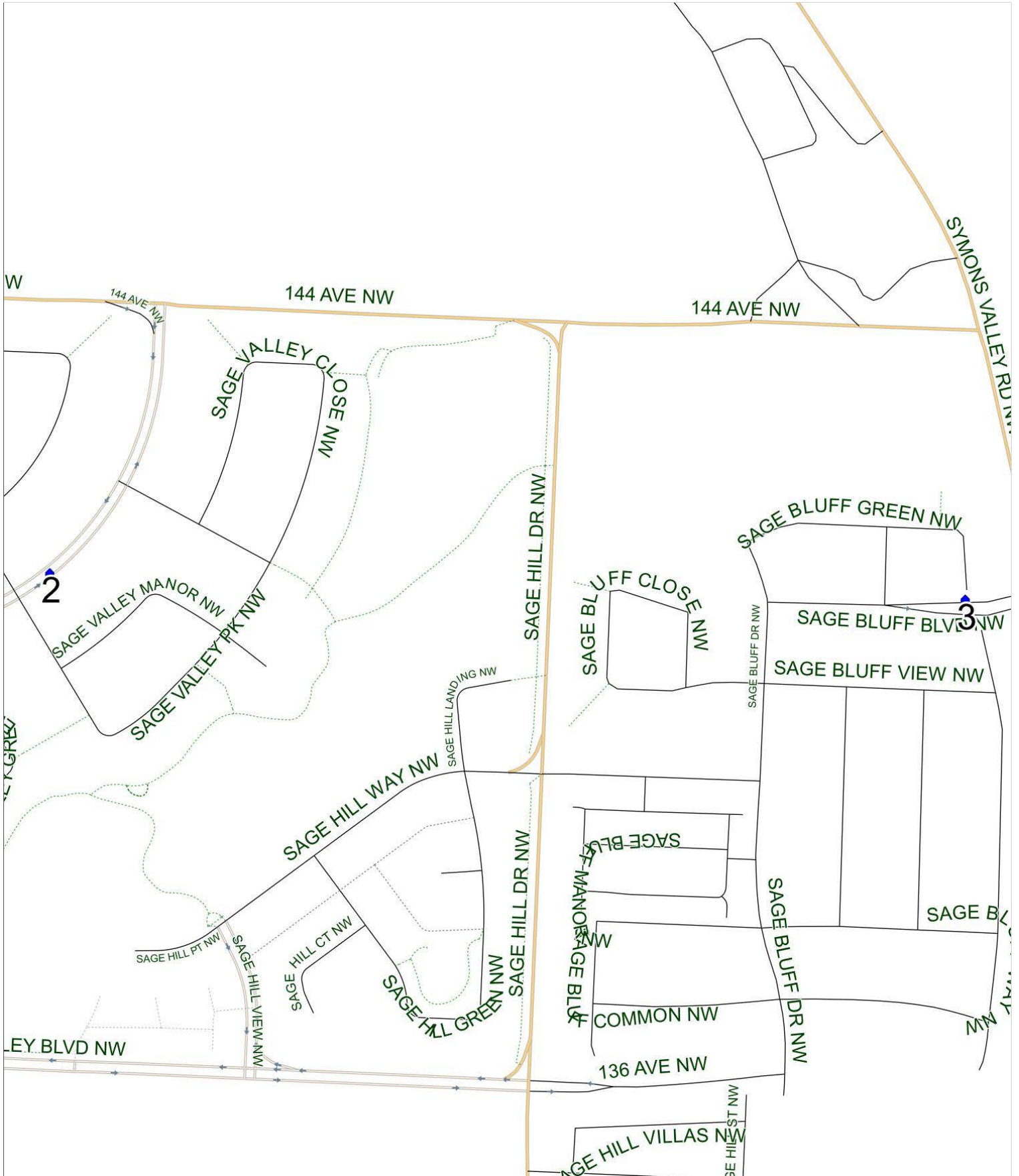


Hawkwood D PM (MTWR)

Operator: Southland - Ogden Yard (403) 253-9323
Description: Sage Hill

Eff: 2019-09-03

#	Time	Description
1	3:55 PM	Hawkwood School, Westbound Hawkwood Boulevard NW
2	4:10 PM	Eastbound Sage Valley Drive after Sage Valley Park NW at CT Stop
3	4:18 PM	Westbound Sage Bluff Blvd after Symons Valley Road NW at pedestrian walkway



Hawkwood D PM (F)

Operator: Southland - Ogden Yard (403) 253-9323
Description: Sage Hill

Eff: 2019-09-03

#	Time	Description
1	1:30 PM	Hawkwood School, Westbound Hawkwood Blvd NW
2	1:45 PM	Eastbound Sage Valley Drive after Sage Valley Park NW at CT Stop
3	1:53 PM	Westbound Sage Bluff Blvd after Symons Valley Road NW at pedestrian walkway

