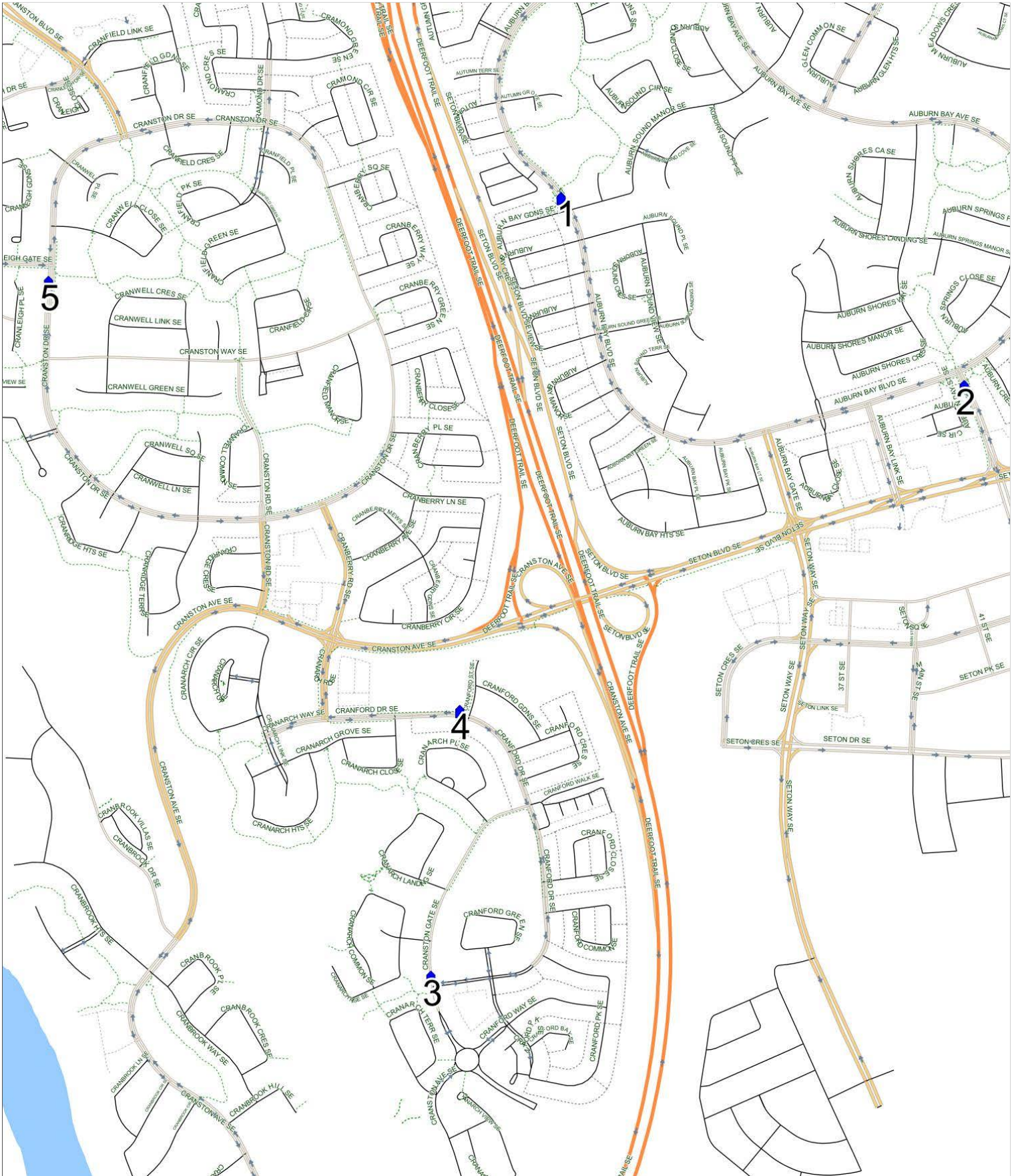


## Louis Riel N

Operator: Southland - Spruce Yard (403) 873-7268  
 Description: Auburn Bay, Cranston

Eff: 2019-09-03

#	Time	Description
1	7:07 AM	Southbound Auburn Bay Blvd after Auburn Bay Common SE at green space
2	7:12 AM	Southbound Auburn Bay Street after Auburn Bay Blvd SE at CT Stop
3	7:18 AM	Southbound Cranston Gate after Cranarch Common SE at start of green space
4	7:21 AM	Westbound Cranford Drive after Cranford Street SE at the CT Stop
5	7:27 AM	Northbound Cranston Drive after Cranleigh Gate SE at CT Stop
6	7:52 AM	Louis Riel School, Northbound Oakfield Drive SW

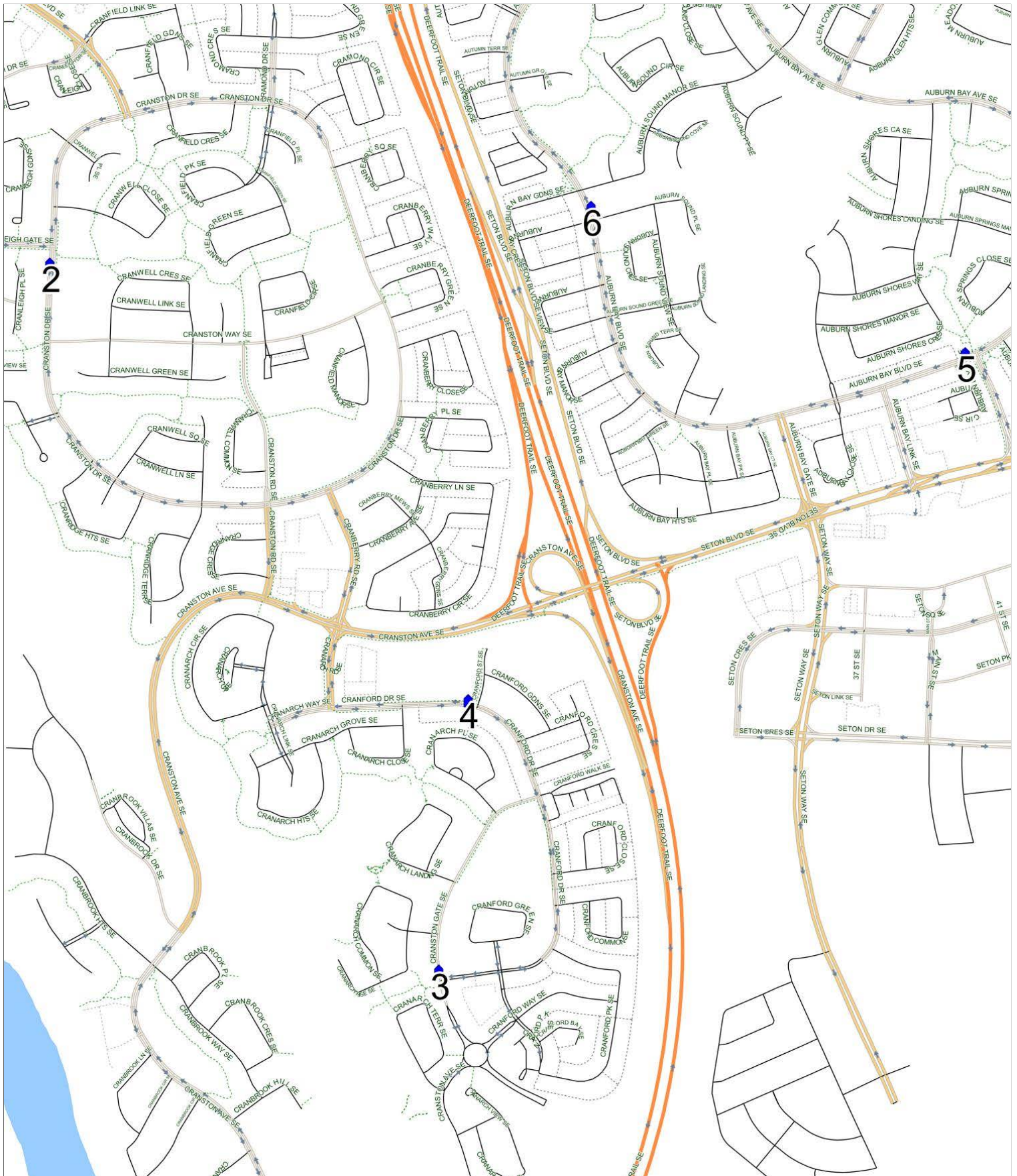


### Louis Riel N PM (MTWR)

Operator: Southland - Spruce Yard (403) 873-7268  
 Description: Auburn Bay, Cranston

Eff: 2019-09-03

#	Time	Description
1	3:00 PM	Louis Riel School, Northbound Oakfield Drive SW
2	3:23 PM	Southbound Cranston Drive after Cranleigh Gate SE at CT Stop
3	3:32 PM	Southbound Cranston Gate after Cranarch Common SE at start of green space
4	3:37 PM	Westbound Cranford Drive after Cranford Street SE at the CT Stop
5	3:44 PM	Westbound Auburn Bay Blvd after Auburn Bay Stree SE at green space
6	3:49 PM	Northbound Auburn Bay Blvd after Auburn Sound Place SE at CT Stop



## Louis Riel N PM (F)

Operator: Southland - Spruce Yard (403) 873-7268  
 Description: Auburn Bay, Cranston

Eff: 2019-09-03

#	Time	Description
1	11:50 AM	Louis Riel School, Northbound Oakfield Drive SW
2	12:13 PM	Southbound Cranston Drive after Cranleigh Gate SE at CT Stop
3	12:22 PM	Southbound Cranston Gate after Cranarch Common SE at start of green space
4	12:27 PM	Westbound Cranford Drive after Cranford Street SE at the CT Stop
5	12:34 PM	Westbound Auburn Bay Blvd after Auburn Bay Stree SE at green space
6	12:39 PM	Northbound Auburn Bay Blvd after Auburn Sound Place SE at CT Stop

