

cbe.ab.ca



Louise Dean Centre Future Plans Discussion Public Meetings

March 18, 2019

learning | **as unique** | as every student



Agenda

- Welcome and introductions
- Purpose of the meeting
- Current Louise Dean facility
- Programming needs
- Future considerations
- Next steps
- Closing remarks



Thank you for participating in our discussions today. As you can see from our agenda, we want to share some information with you and gather your feedback regarding some proposed future options regarding Louise Dean Centre.

Welcome and Introductions

- Dr. Dianne Yee, Director, Area 4
- Carrie Edwards, Director, Property, Planning and Transportation
- Anne Trombley, Manager, Planning
- Jackie Chapman-Brown, Education Lead
- Karla Anderson, Community Engagement Advisor
- Helen Colbourne, Principal, Louise Dean Centre
- Allison Orpe, Assistant Principal, Louise Dean Centre

We Are Committed

- To continue to provide programming for pregnant and parenting teens
- To continue to ensure the students have access to external supports - Catholic Family Service (CFS), Alberta Health Services (AHS)



4

Louise Dean Centre has a long history in the CBE, over 60 years of working with students in partnership with others.

Catholic Family Service as well as Alberta Health Services both have staff on site at Louise Dean Centre who provide ongoing support and services to our students and their families.

The CBE is committed to continue to provide support for pregnant and parenting teens and the partnership we share with CFS and AHS.

Louise Dean Centre

Programming for pregnant and parenting teens. School is located in Kensington, NW Calgary.

- **CBE staff** | 2 administrators, 13 teachers and 4 support staff
- **Partners onsite** | Currently 35 full time & 11 part time CFS staff and 3 part time AHS staff located in 2 adjacent portables and in main building
- **Enrolment** | fluctuates between 70-165 young women
- **Day care** | Approximately 60 babies being cared for (newborn to 35 months) in three licensed developmental daycares (CFS staff)
- **Summer school** | Four week summer school program
- **After hour programming** | Evening programming throughout the year

5

This slide illustrates the staff, students and programming that occur at Louise Dean Centre. We have staff who work in the building 11 months of the year, supporting students and programming. If the CBE were to consider any changes to the space or programming, these are important factors that need to be considered in any future decision making.

Specific Space Criteria

- Academic programming
- Learning Commons
- Cafeteria
 - prepares 200 meals daily
 - accommodates both students and their children
- Gymnasium/Fitness area
- Medical office/Examination room
- Three licensed development daycare spaces
- Indoor stroller parking (60)
- Playground
- Administrative and staff space

6

In addition to the programming needs, in consultation with the school admin team, we have also identified some important space allocations that should be considered in any future decisions. Each of these areas plays an important role in the success of the programming for students.

Program Criteria

- Adequate space for programming needs
- Centrally located with access to a variety of transportation
- Access to Career and Technology Studies programming
- Ability to house Catholic Family Service and Alberta Health Services staff to offer wrap-around supports

7

In addition to the program and space requirements, we recognize that a centralized location is preferable for student access to the program. We are already working at our current site with Calgary Transit and will continue to do that moving forward as we recognize that transportation is an important element to the program.

We also recognize that as high school students, access to Career and Technology Studies programming is important to fulfill the requirements of the high school program. Some of those courses are currently provided onsite at Louise Dean; and, when a student's program requires it, additional courses can be accessed at a neighboring high school.

With the valued partnership we have with both AHS and CFS we wanted to explore any opportunities there may be to house these support staff physically connected to the school as they are currently in a detached portable on the current site.

Louise Dean Centre Site

- Core school is 60+ years old
- Because of its age, building has high operating costs and requires significant infrastructure investment
- Current facility at capacity in terms of space
- Some partner staff housed in two adjacent portables

8

Some history on the Kensington School site where Louise Dean Centre is currently housed.

The building, as with many buildings in the CBE was built in the 1960's. The building is safe and maintenance continues to ensure it remains that way into the future. Teachers and students have made appropriate use of all available space in the current building; however, the school is at capacity and there is no way to create more space for students.

Why Is Planning Needed



- Building, in its current use, is at capacity
- Current site requires significant infrastructure investments

9

Given the program, space and current facilities, the question became...if we are looking at an investment into the future to support the continued success of the Louise Dean program, is investment in the current site the most beneficial opportunity or could there be consideration for a move to a new location that could better meet the needs previously outlined here?

Options Considered



- Complete deferred maintenance on existing building
- Invest in alternate location that could enhance programming needs

10

One of the pillars of the Three-Year CBE Education Plan is to be effective stewards of our resources. This means, we need to look at investments in our schools to ensure that the funding we have for building maintenance is being spent in the best possible way to ensure student success into the future. Deferred maintenance means fixes that are not urgent but require consideration into the future.

So, the question is, invest in the current facility or invest in an alternate location that may be able to provide greater access to the program requirements and partnership offerings provided by the program.

Recommendation



- Relocation
- Process
- Possible timeline

11

So the work of the planning team was to examine current schools within the CBE that may have excess space that can accommodate the student population of Louise Dean Centre including the support services available.

How was the new site determined?

1. Consider the programming needs of Louise Dean School as well as other variables such as access to CT. This is the information Dianne presented in previous slides and included the requirements for learning, child care and partner spaces.
2. List out all the schools with available learning space within the CBE.
3. Based on priorities identified by the school we began the process of elimination:
 - a. All elementary schools were removed as they had limited or no access to CTS spaces as required by the program.
 - b. Most of our middle/junior high schools are at or near capacity. Those with space, had insufficient space to meet the program demands outlined by the school.
 - c. Consider high schools with space. After consulting with AD, school admin and superintendent's team, feedback was provided to not locate the program

in the wing of an existing high school.

4. Review existing vacant spaces within CBE (i.e. encore space at Ed. Centre, closed schools etc).

Based on steps 1-4 above, Dr. Norman Bethune was the most viable option to meet the space and programming requirements as well as the proximity to CT. It had access to CT spaces within the school, proximity to LBB if greater variety of CTS options were required, proximity to CT and the C-Train at Heritage station, possibility of adding modular classrooms for the partners to be connected physically to the school.

Once a possible location was determined, CBE administration began the work with the school administrative team to explore the opportunities and challenges involved with both remaining at the current school site as well as those that might be involved in moving to a different location. We discussed the process that would need to be followed including the potential timelines involved.

TIMELINE:

The project schedule is based on five main activities: engagement of consultants and contractors, design and construction documents, municipal approval and public engagement, construction, and licensing. These durations exist regardless of when we are approved to begin the process in FP.

Engagement of consultants (RFP) is 6-8 weeks

schematic design is 8-12 weeks,

Municipal approval (development permit) is 8-12 weeks, and includes public engagement

Construction documents are 4-5 months, and will run parallel with the municipal approval process

Engagement of contractors (tender/bid) is 2-3 months

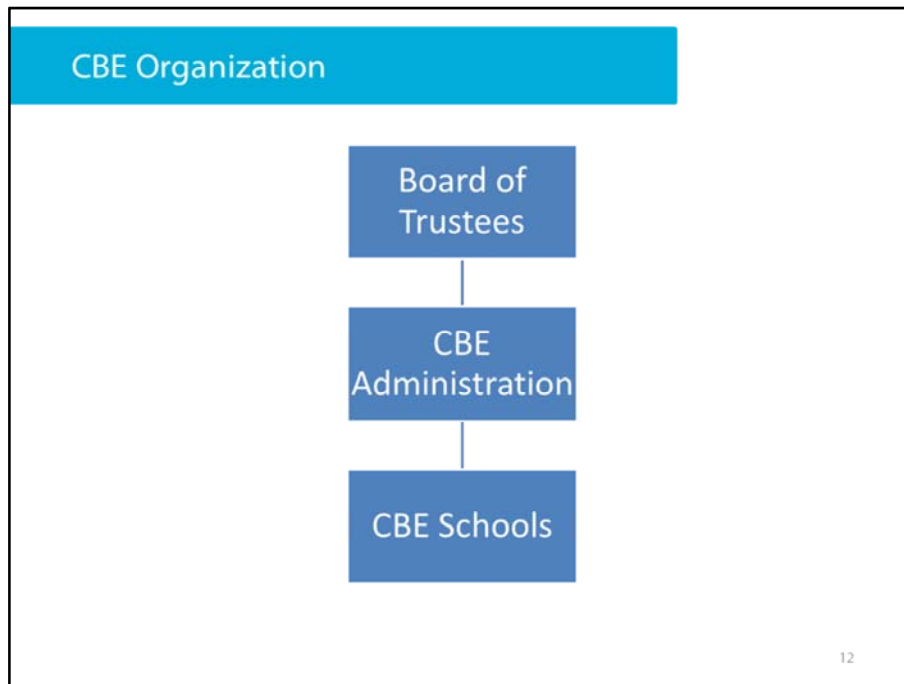
Construction will be 9-10 months or more

Further complicating the schedule are two factors: how much design work we can undertake prior to the board motion to consider closure, and when we can obtain childcare licensing.

The Supt's current approach is not to unduly influence the Board's decision to close the school by initiating design prior to formally beginning the closure process. Even if this were to begin tomorrow, we would not be complete construction until early 2021, best.

Childcare licensing can only take place in August of any year, as the school will need

to move all of its existing furniture, equipment, toys and supplies to the new location prior to having an inspection. The new location must pass inspection prior to receiving its childcare license, and the current license must be maintained until the end of July of any academic year, otherwise the Louise Dean program would be unable to operate.



If and when a program closed to move to a new location, the move triggers a closure process under the Alberta School Act, Closure of Schools Regulation. The regulation states that if you are moving 3 or more consecutive grades of a program, you must follow the formalized process set out in the legislation.

CBE administration cannot close a school or a program – this decision rests with the elected officials who are the Board of Trustees for the CBE. The process would go as follows:

1) CBE administration would make a recommendation to the Board of Trustees to consider the closure of the Louise Dean Centre for the purpose of relocation. Two outcomes are possible from this recommendation:

a) If the Board of Trustees votes not to consider closure of the program for the purpose of relocation, CBE administration would work with the existing facility to ensure the site and the programming are sustainable into the future.

b) If the Board of Trustees votes in favour of consideration of closure for the purpose of relocation, this sets in motion a number of public notices and meetings. After this public consultation process has occurred, a report back to the Board of Trustees would include all of the information gathered and presented to

inform them of the work and assist them in making a final decision on the possible closure of the program for the purpose of relocation.

Two outcomes are possible at this juncture in the process.

i) the Board of Trustees votes not to close the program at its current location and we refer back to the plans listed in (a) above

ii) the Board of Trustees votes to close the program to relocate to a new site and the implementation plan to move the program begins.

2) The final step in the process is if the Board of Trustees moves forward on the closure of the program in order to relocate it, they must seek approval of the Minister of Education to proceed.

Under the Closure of Schools Regulation, a consideration of closure of a program must begin and end within the same school calendar year. This would occur in the latter part of spring 2019. If the program is closed in order to relocate, the program would continue at the current site, with the new site proposed opening for students in September 2021. This timeline would allow for any necessary work to be completed to prepare the school for the students, staff and program.

To reiterate, the CBE is committed to the Louise Dean Centre program. If you hear about closure into the future related to Louise Dean, it would be in relation to closing the program at it's current site at Kensington School to relocate it elsewhere.

Proposed New Site

- Dr. Norman Bethune School
 - Size
 - Access to public transportation and collaboration with Calgary Transit
 - Proximity to Lord Beaverbrook High School (CTS courses)

13

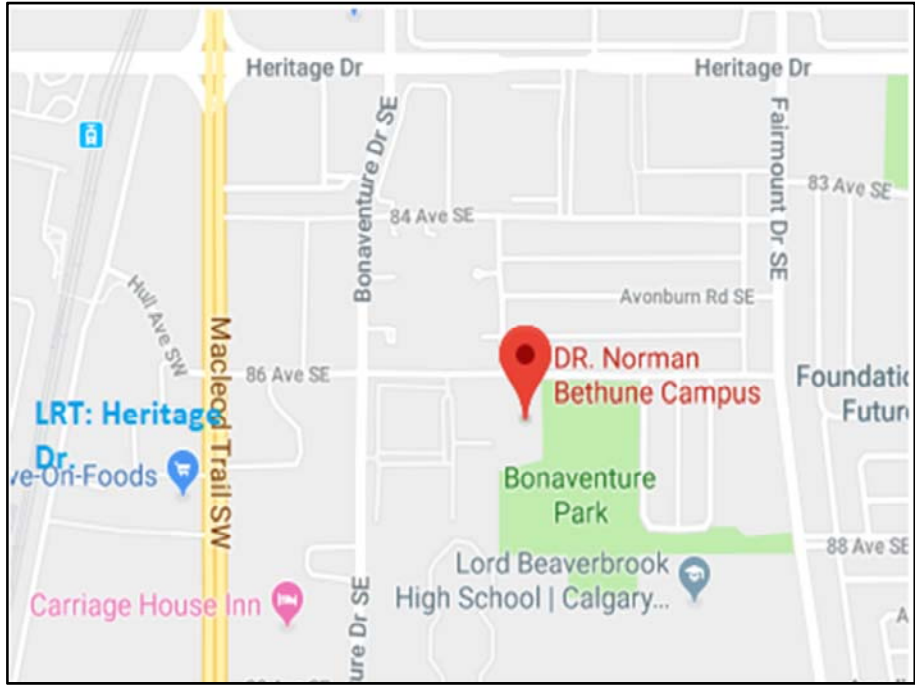
Once the planning department reviewed schools with available space, it was determined that few schools have the capacity to add the staff and program the size of Louise Dean into their current facility. One of the central criteria was that this program not be located in a current high school.

This left us with few options, and Dr. Norman Bethune School emerged as the best possible choice. This school shares a field with Lord Beaverbrook High School. Built originally as an elementary school, it has been used as a charter school in the past as well as housing an alternative program and the area office for a short time. Due to its varied uses over time, there have been some investments made in the building. While it requires work, it does so to a lesser extent than Louise Dean.

The school has more classroom space available than the current Louise Dean site, spread over two floors with a large open area on the main floor. The school has lockers as well as several rooms already set up as CTS spaces (art, foods). The proximity to Lord Beaverbrook High School provides the potential to enhanced access to a variety of CTS classes.

Dr. Norman Bethune School is several blocks east of Macleod Trail and has access to the Heritage LRT station which is a short distance away. Like we have been here

at the current site, we would work with Calgary Transit to determine any possible enhanced transit service that might be available should the move proceed.



Next Steps

- Gather and review feedback
- Continue conversations with staff, students, parents, community and partners
- Share feedback with Board of Trustees

15

The next steps in the process include gathering your feedback. You have a handout with you and we would like you to take a few minutes with your elbow partner and provide information on the following:

- 1) What are the opportunities and challenges of relocating the program?
- 2) What are the opportunities and challenges of keeping the program at its current location?
- 3) Additional questions and/or comments.

We will collect your feedback sheets today and collate the information. This information will be available on the website in the coming weeks.

Given the work to date, CBE Administration will be recommending relocating the program. We do want feedback from you— your voice and your lived experience are important to us. Once we have had our meetings with staff, students and parents/community, we will analyze the feedback to inform the next steps in the process.



Feb 20, AM (Students)

Photo of the school: Dianne spoke about green space, parking lot, playground then back to next steps.



Calgary Board of Education