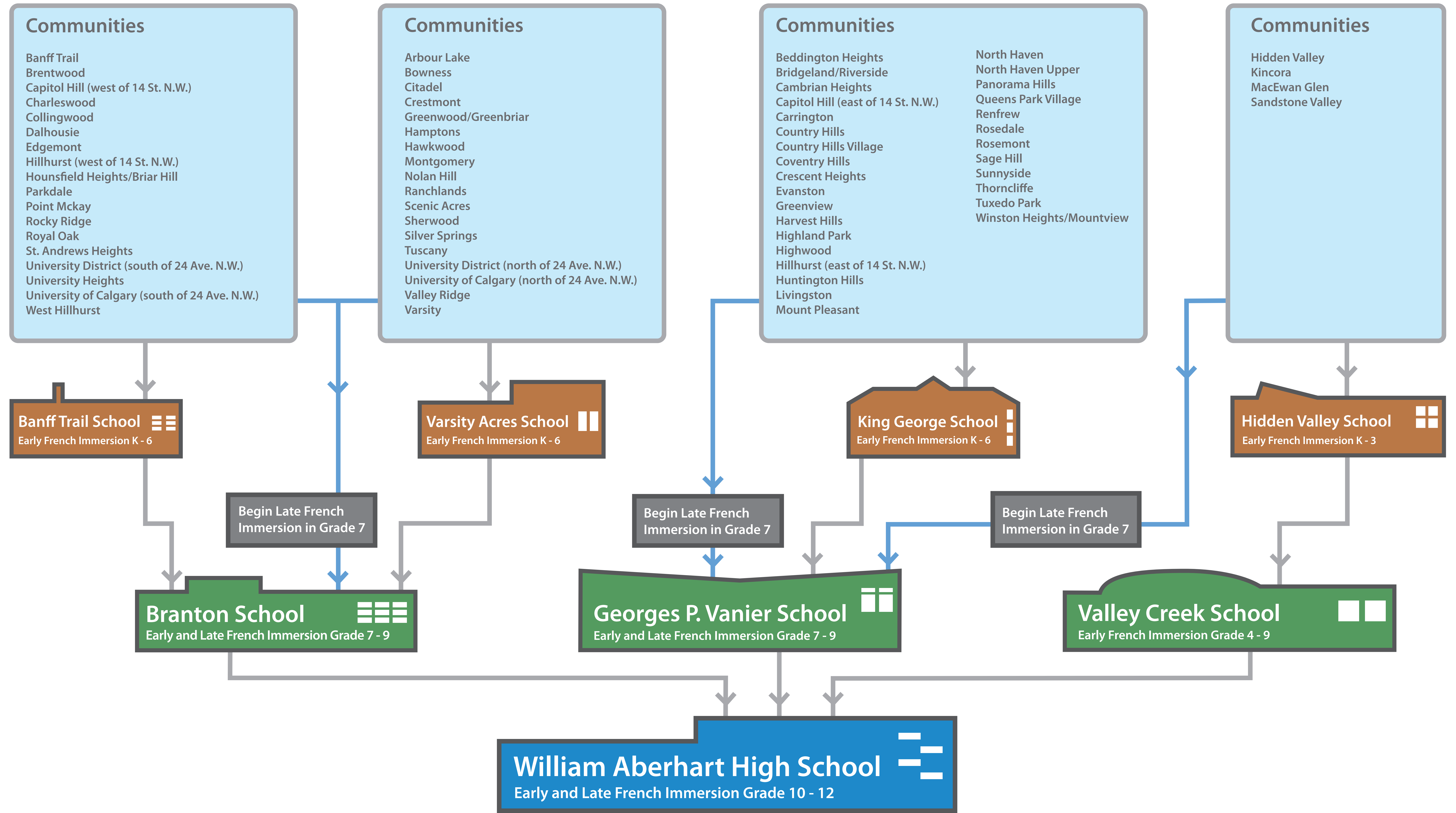


2017-18 Residential Districts and Designated Schools



*Note: Some of these schools may offer more than French Immersion and this chart relates to French Immersion only.

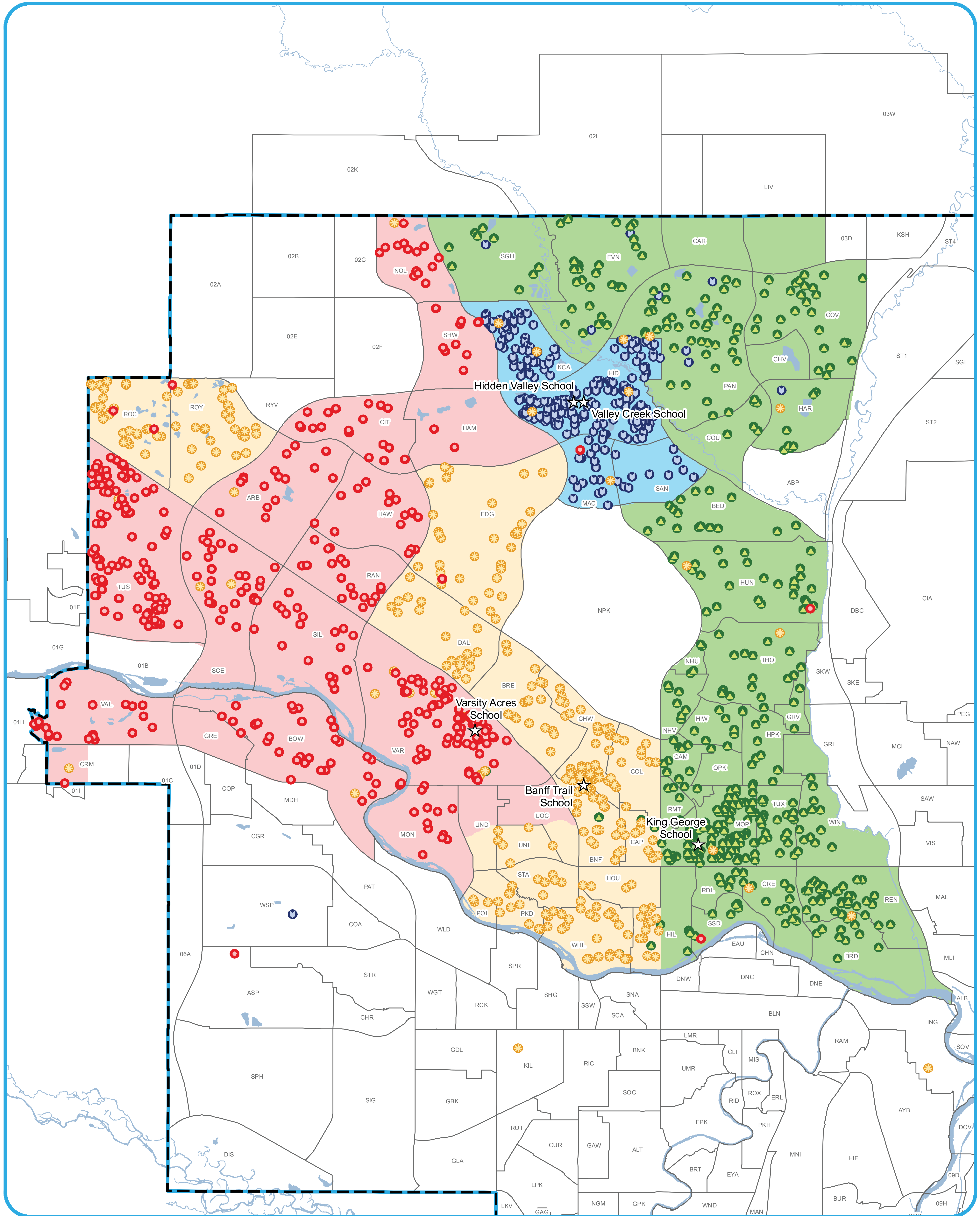
School Enrolment and Utilization

School	Grades	2017 Enrolment			Instructional Space Available	Current Utilization Rate	Highest Enrolment Projected Over Next Five Years (Status Quo)
		French Immersion	Other	Total			
Hidden Valley School	K-3	242	204	446	550	74%	450-475
Banff Trail School	K-6	454	n/a	454	450	95%	475-500
King George School	K-6	607	n/a	607	650	86%	625-650
Varsity Acres School	K-6	563	n/a	563	625	86%	500-550
Valley Creek School	4-9	216	508	724	840	91%	650-700
Branton School	7-9	718	n/a	718	835	90%	750-800
Georges P. Vanier School	7-9	220	150	370	590	67%	425-450
William Aberhart High School	10-12	777	671	1,448	1,545	99%	1,600-1,700



Northwest and North Central French Immersion Program K - 6 Students

Banff Trail, Hidden Valley - Valley Creek, King George and Varsity Acres Schools as of September 30, 2017



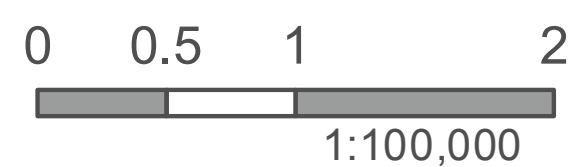
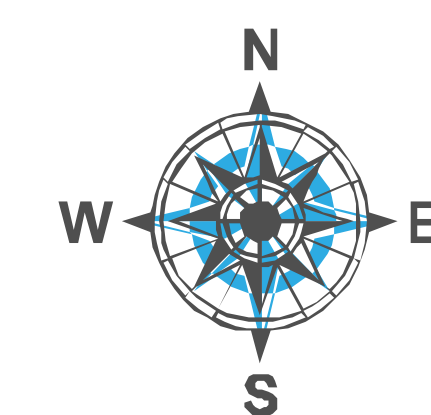
★ School

Attendance Area

- Banff Trail
- Hidden Valley/Valley Creek
- King George
- Varsity Acres

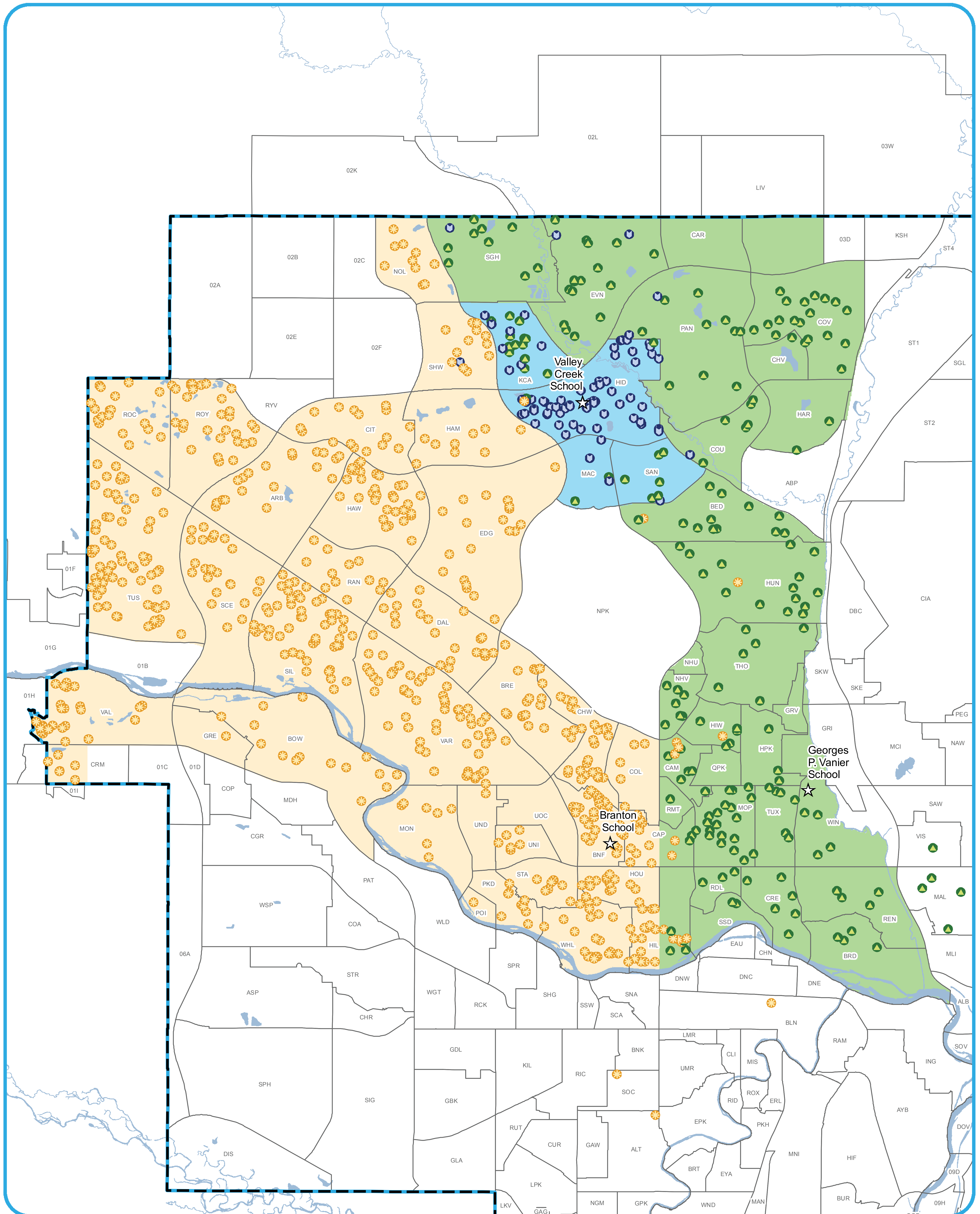
- Banff Trail Student
- Hidden Valley/Valley Creek Student
- King George Student
- Varsity Acres Student

- CBE Boundary
- Community Boundary
- Water Body



Northwest and North Central French Immersion Program Grade 7 - 9 Students

Branton, Georges P. Vanier and Valley Creek Schools
as of September 30, 2017



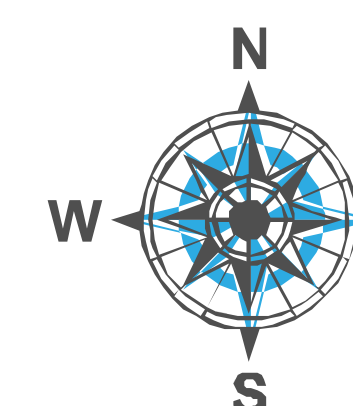
★ School

Attendance Area

- Branton
- Valley Creek
- Georges P. Vanier

- Branton Student
- Valley Creek Student
- Georges P. Vanier Student

- CBE Boundary
- Community Boundary
- Water Body



0 0.5 1 2 Kilometres
1:100,000

NAD 1983 3TM 114
Prepared by: Planning & Transportation
Map: North Jr High FI Students.mxd
Date: November 10, 2017