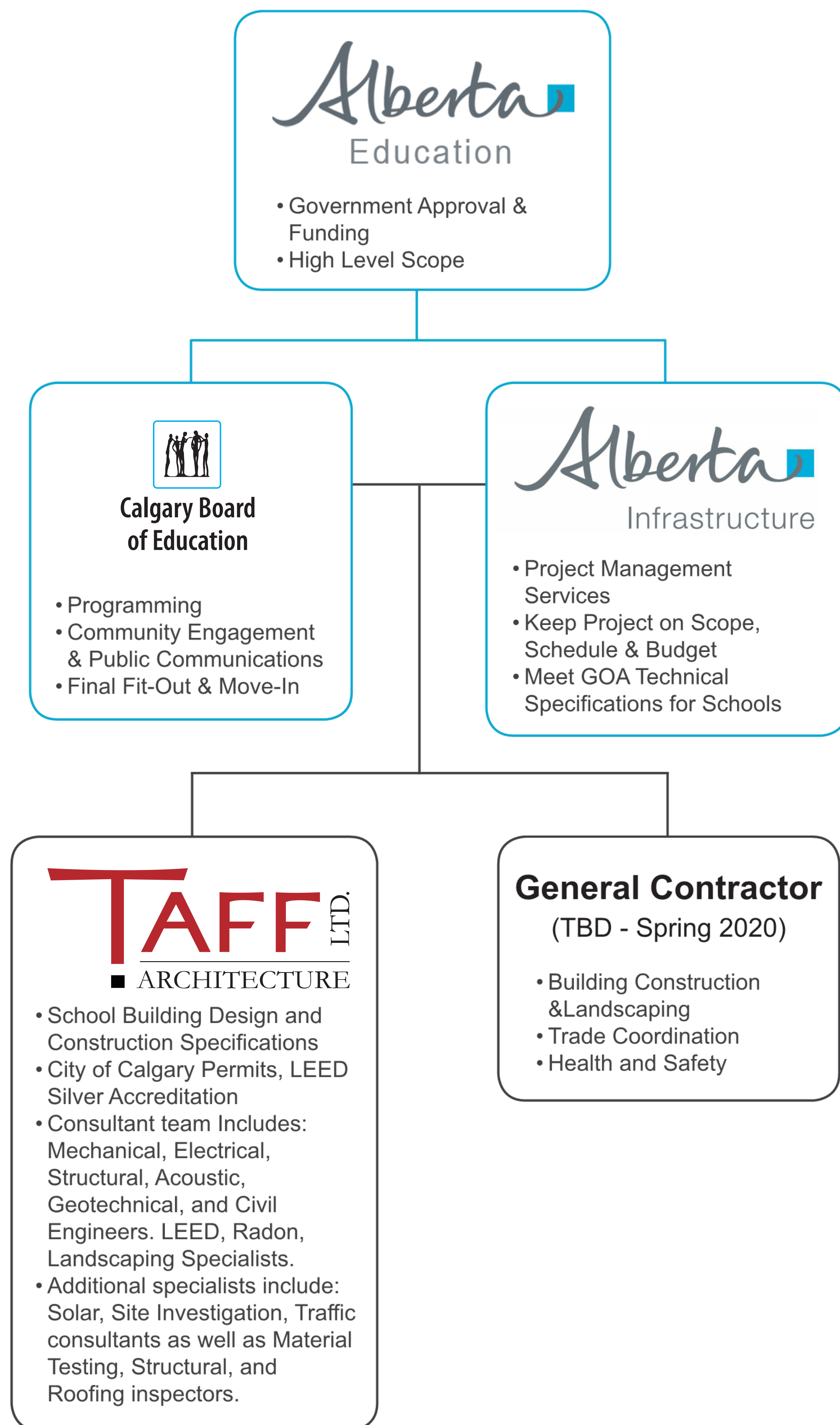


# Auburn Bay School Open House

Alberta Education, Alberta Infrastructure and the Calgary Board of Education are working together to design and build a new school for the community of Auburn Bay. Tonight, we are sharing information on the design of the new middle school, including general project information, timelines, site planning, traffic considerations and building design.

Alberta Infrastructure, CBE and Taff Architecture staff are here to answer any questions you may have about the preliminary design, or direct you to the information you are looking for.



# New School Timeline

**May 15, 2019:** Representatives from the Community Association, Calgary Police Service, Calgary Board of Education, Alberta Infrastructure and consultants met to identify community issues or concerns

**June 4, 2019:** Community Open House (TONIGHT)

**June 2019:** Response to community open house feedback: report to community association; information posted on [www.cbe.ab.ca/newschools](http://www.cbe.ab.ca/newschools) - Auburn Bay Middle

**July 2019:** Development permit application circulated to community association and to public at large for comment.

**TBD:** Funding Announced for Phase 2 – Construction

**Note:** School opening date will not be announced until a contractor is hired and all permits are approved.

Project updates will be posted at [www.cbe.ab.ca/newschools](http://www.cbe.ab.ca/newschools) throughout the school design and construction phases.

During the academic year prior to school opening, the following will occur:

- Public open house will be held to share information on school designation area, walk zone and grade configuration
- The Board of Trustees will announce the school name

# Provide Feedback

Your feedback and input is valuable to us.

Your feedback and input will be considered with respect to the planning of:

- Site access, parking and drop-off locations
- Traffic improvements
- General site configuration
- Other building design considerations

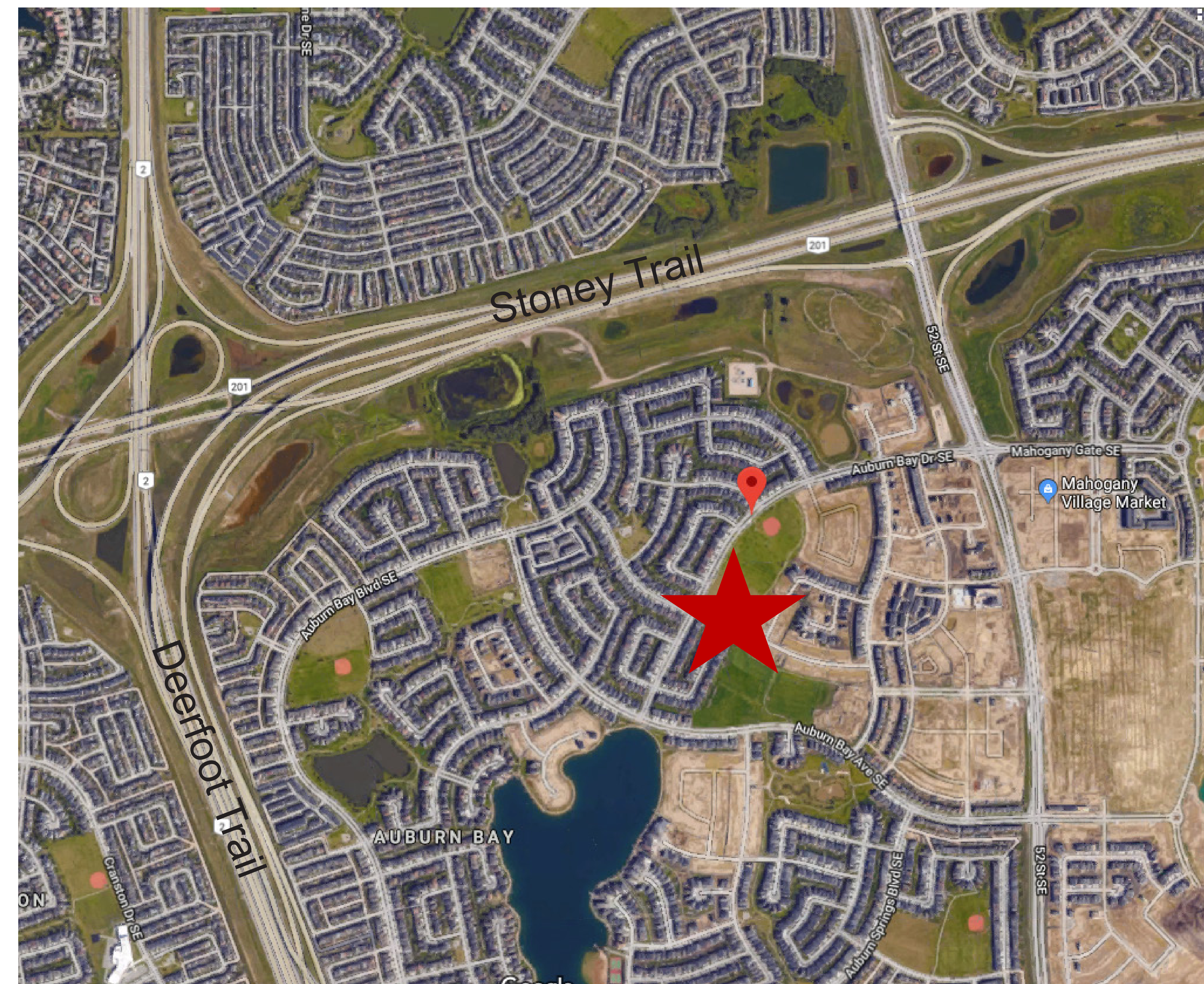
New school construction decisions that cannot be influenced:

- The new school site
- The size and capacity of the school
- The location of the soccer field
- The total number of parking stalls provided for staff
- The total number of designated spots for parent drop-off and visitor parking

# Project Information

## Auburn Bay Middle School:

- Approved for Phase 1 - design only in June 2018
- Construction not yet approved
- Located at 430 Auburn Bay Drive SE
- 900 student capacity school
- Two-storey building
- 8,071 m<sup>2</sup> (86,875 ft<sup>2</sup>) of permanent construction – no modular classrooms
- Sustainably designed | LEED Silver certification including roof-mounted solar panels

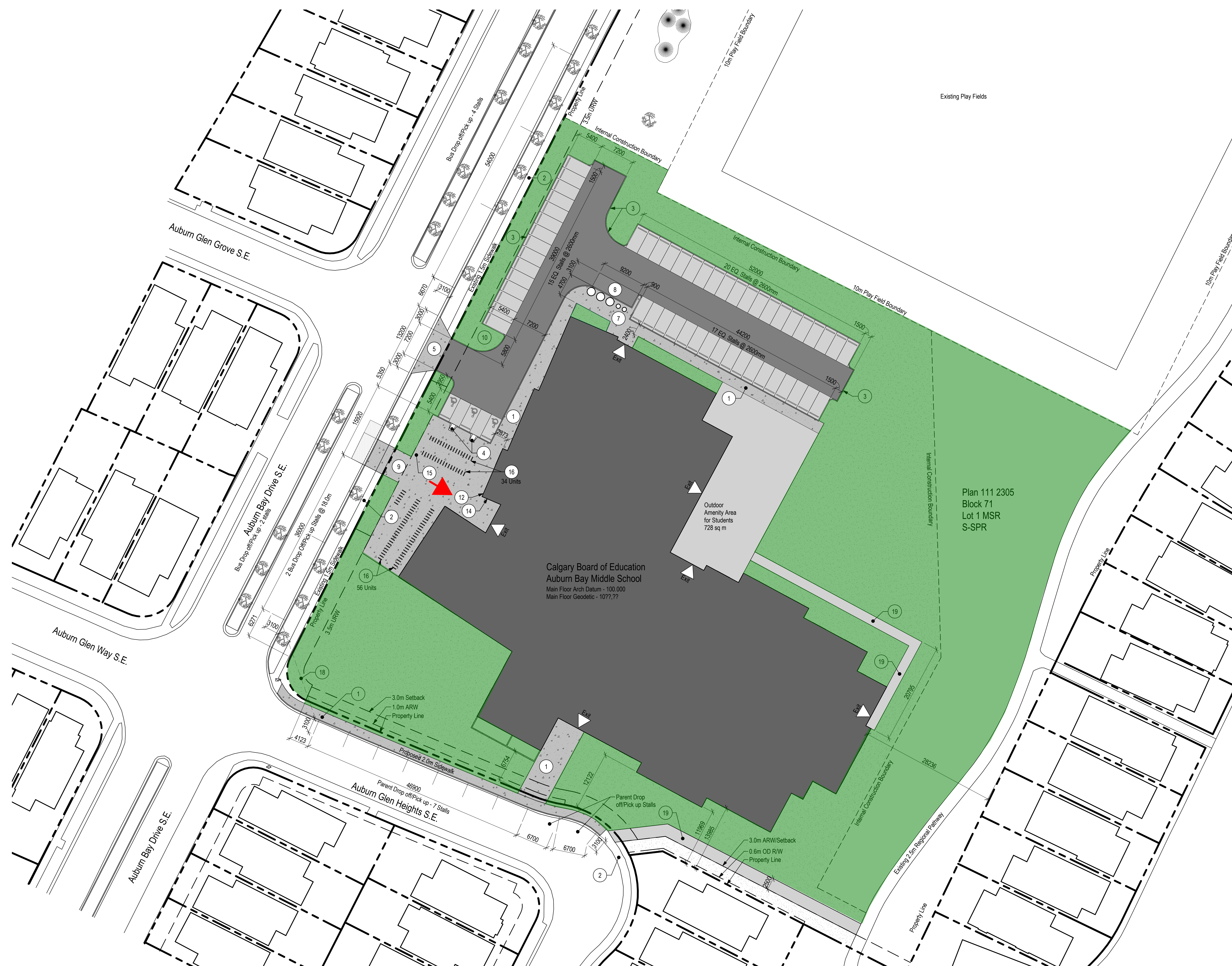


Auburn Bay Community Overview

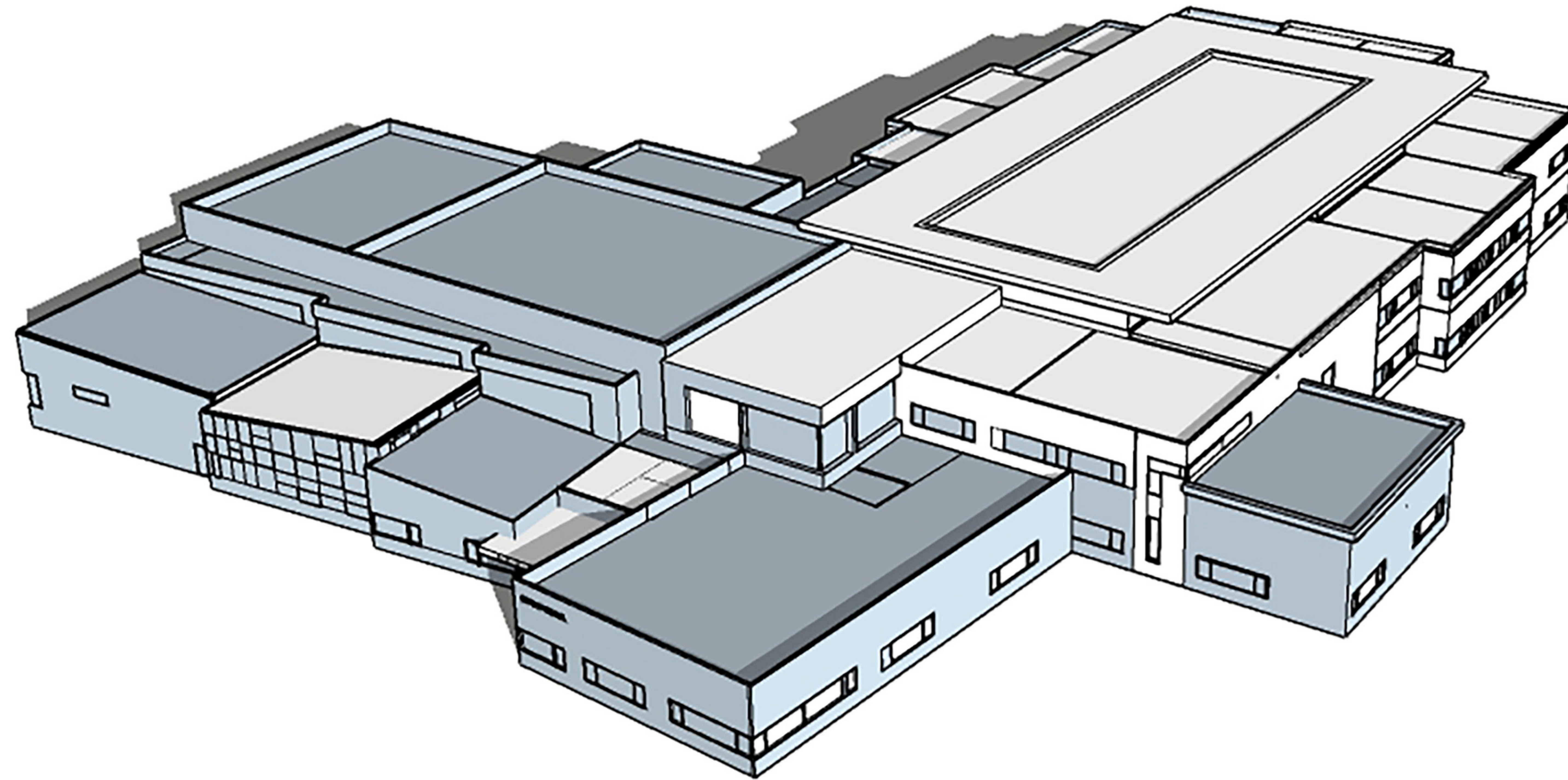
# We appreciate your feedback.

Please drop off your feedback forms in the box provided. You can also provide your feedback at [cbecommunications@cbe.ab.ca](mailto:cbecommunications@cbe.ab.ca) by June 14, 2019.

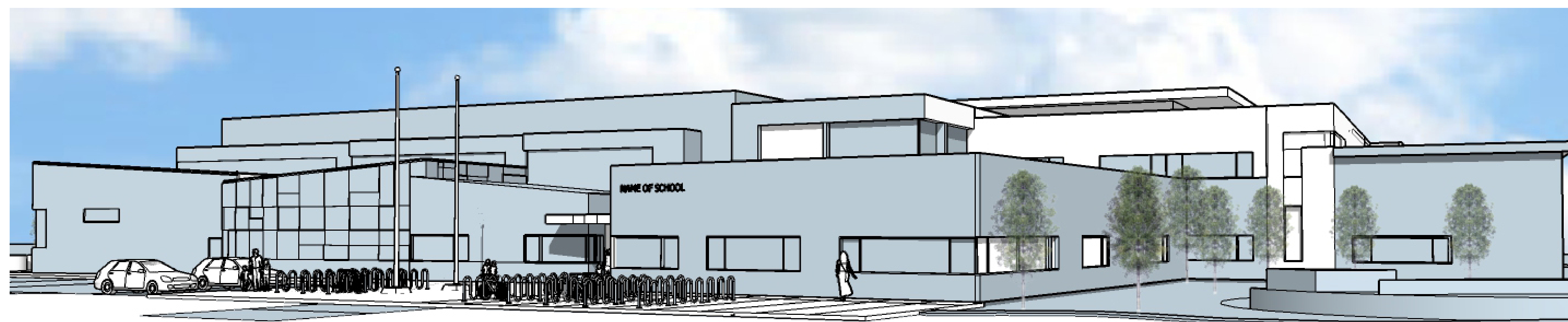
Thank you for joining us tonight!



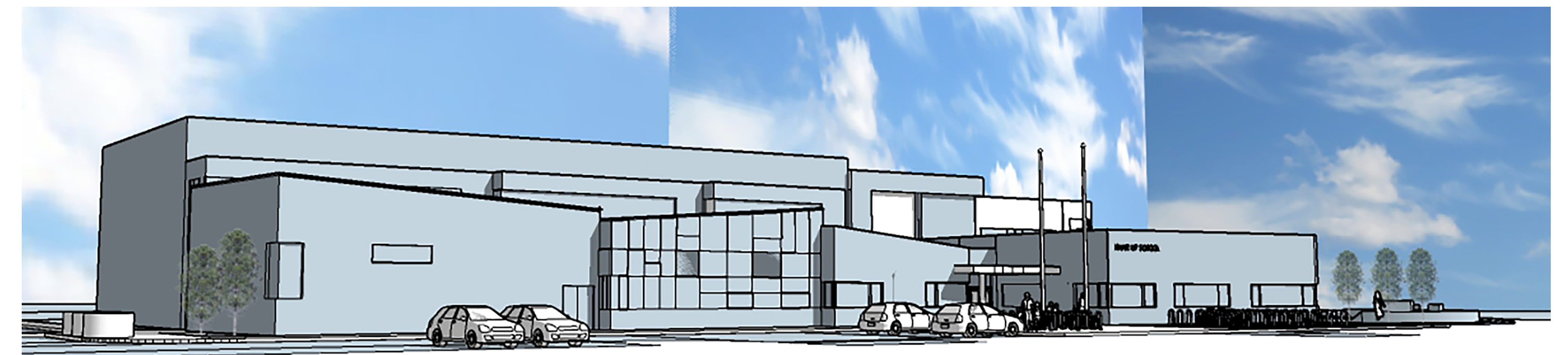
Proposed Site Plan



West Aerial View - Looking East



North West Perspective - Looking Sout East



North Perspective - Looking South